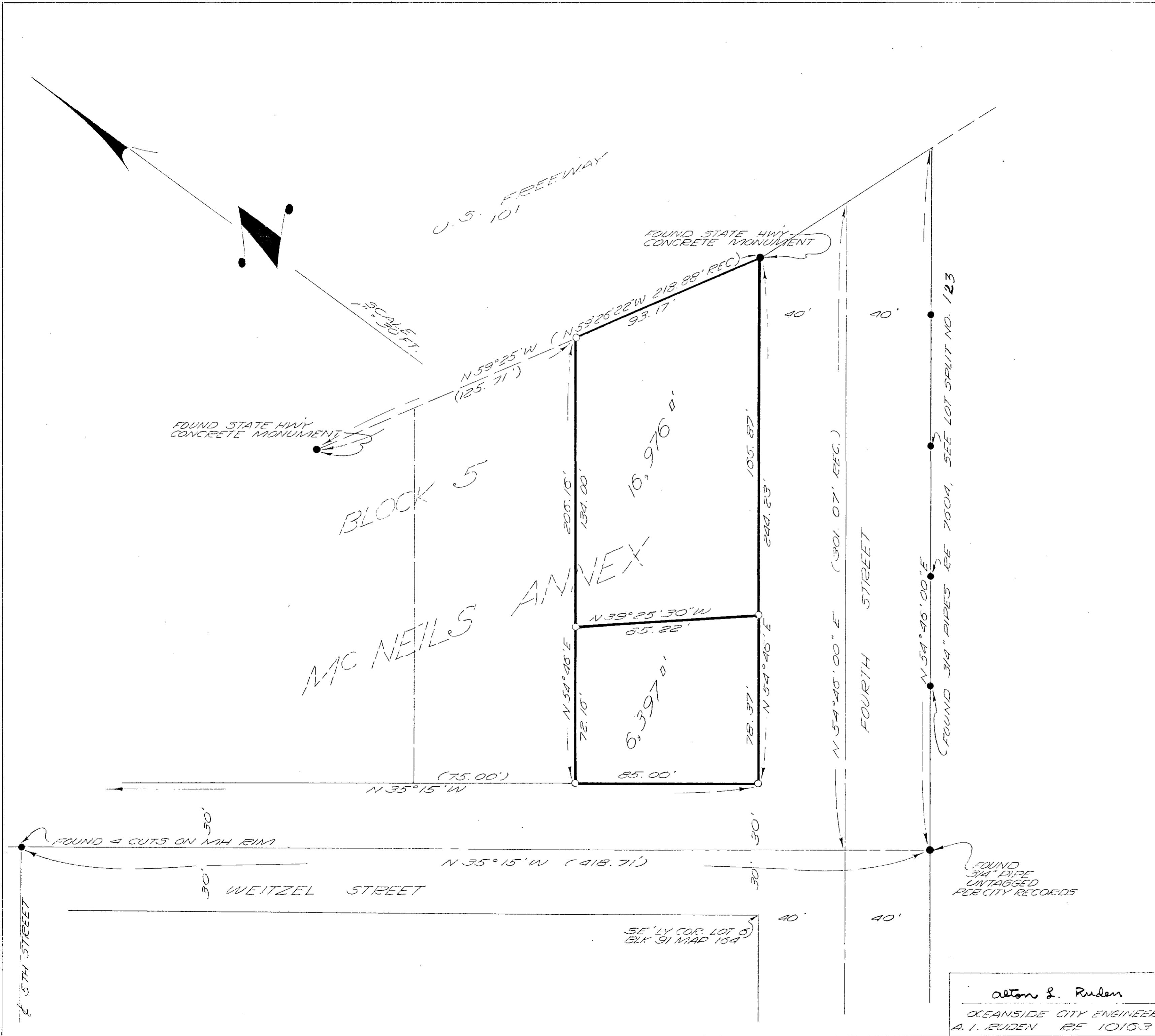


A PROPERTY SURVEY OF A PORTION OF ACRE TRACT NO. 5 OF ANNEX TO MC NEILS ADDITION AS SHOWN ON MAP 154



LEGEND

- SET 3/4 INCH PIPE WITH CEMENT PLUG & TAG RCE 7504
- FOUND AS SHOWN

BASIS OF BEARING - IS THE SOUTHERLY LINE OF FOURTH STREET EAST OF WEITZEL STREET AS SHOWN ON CITY MAPS OF THE AREA IS. N54°46'E

LOT SPLIT		
FOR		
JORDAN L. SMITH		
OCEANSIDE		CALIFORNIA
DRAWN 1/30/Johnstrop	DRESSELHAUS ENGINEERS <i>Donald F. Dresselhaus</i> RCE 7504	DATE 8-14-58
CHECKED w/mj		SCALE 1" = 30'
APPROVED A.L. RUDEN R.E. 10103	528 50 HILL ST. OCEANSIDE, CAL. SA-2-2120	SHEET 1 OF 1

*Alton E. Ruden*  
OCEANSIDE CITY ENGINEER  
A.L. RUDEN R.E. 10103