

SPLIT LOT MAP NO. 143

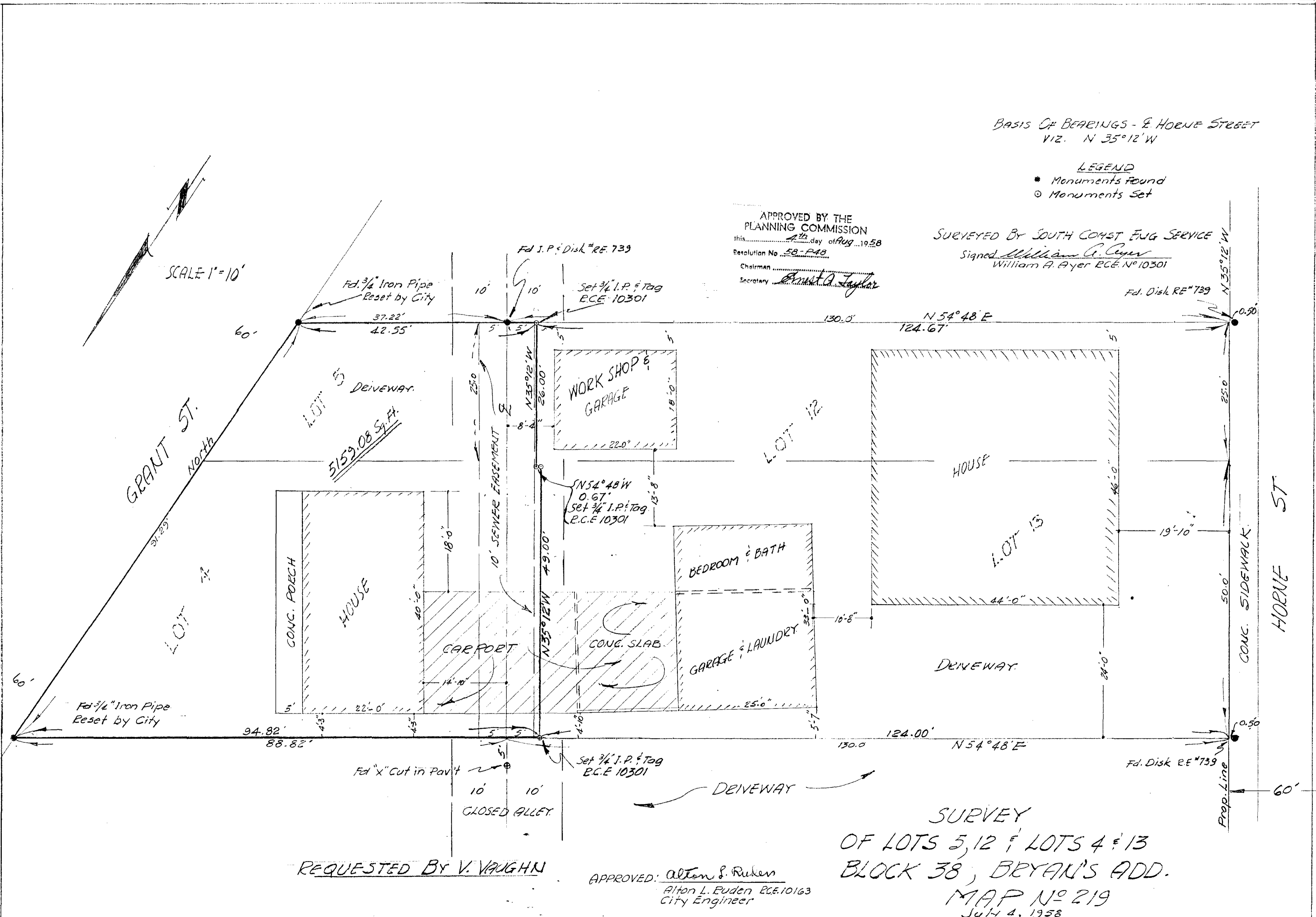
BASIS OF BEARINGS - E. HOENE STREET
VIZ. N 35° 12' W

LEGEND
 * Monuments Found
 ○ Monuments Set

APPROVED BY THE
 PLANNING COMMISSION
 this 4th day of Aug 1958
 Resolution No. 58-248
 Chairman Ernest A. Taylor
 Secretary

SURVEYED BY SOUTH COAST ENG SERVICE
 Signed William A. Ayer
 William A. Ayer R.C.E. No. 10301

SCALE 1" = 10'



REQUESTED BY V. VAUGHN

APPROVED: Alton S. Rukens
 Alton L. Euden R.C.E. 10163
 City Engineer

SURVEY
 OF LOTS 5, 12 & LOTS 4 & 13
 BLOCK 38, BRYAN'S ADD.
 MAP No 219
 July 4, 1958