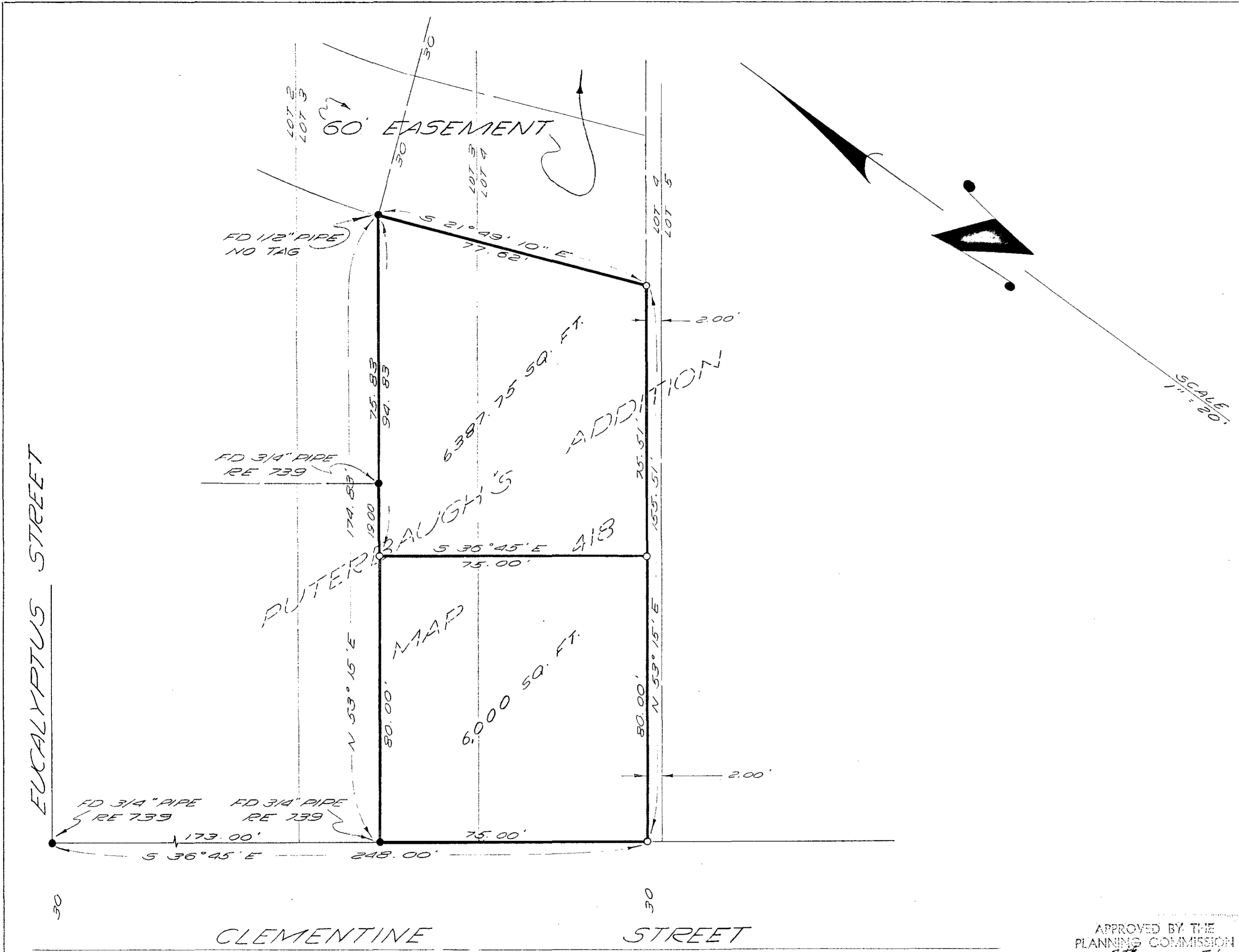


A PROPERTY SURVEY OF
A PORTION OF LOTS 3 & 4, BLOCK 1
OF PUTERBAUGH'S ADDITION
MAP 418



- LEGEND -

- INDICATES SET 1/2 INCH PIPE WITH BRASS TAG NO. 12CE 7604 SET IN CONCRETE PLUG.
- INDICATES FOUND AS SHOWN
- INDICATES PROPERTY LINE

BASIS OF BEARINGS IS THE
CENTERLINE OF CLEMENTINE STREET
IS S 36° 45' E

APPROVED BY THE
PLANNING COMMISSION
this 7th day of July 1958
Resolution No. 58-P41
Chairman _____
Secretary *Arust Taylor*

LOT SPLIT		
FOR HAROLD ANDREWS 307 WEST ST. OCEANSIDE, CALIF.		
DRAWN <i>R. Johnson</i>	DRESSSELHAUS ENG. <i>Harold Andrews</i>	DATE 7-31-58
CHECKED <i>w/f 11/1</i>	RCF 7604	SCALE 1" = 20'
APPROVED A. L. RUDEN RE 10163	528 SO. HILL ST. OCEANSIDE, CAL. SA-E-2126	SHEET 1 of 1