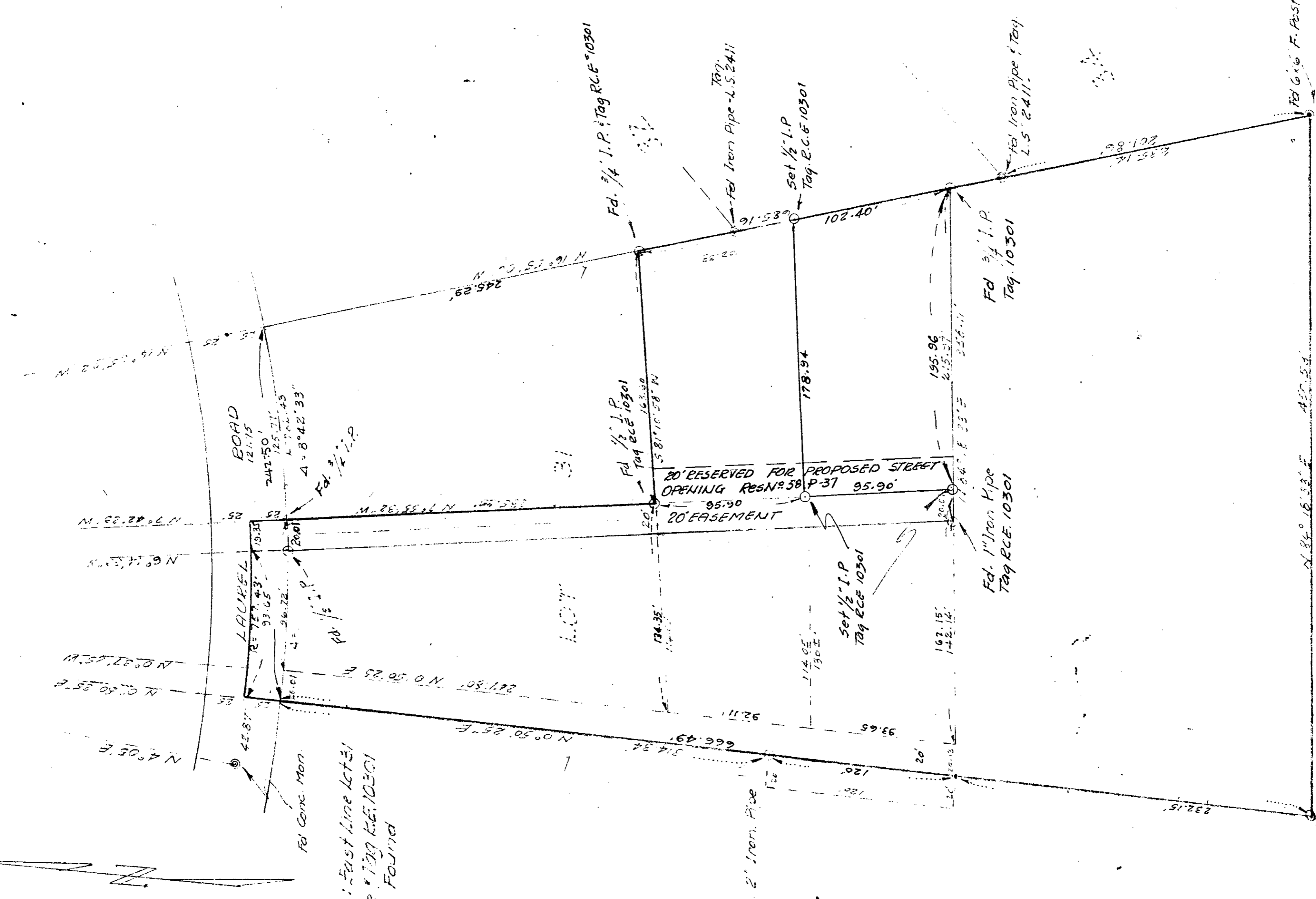


SPLIT LOT MAP #145



SCALE 1"=50'

Basis Of Bearings: East Line Lot 31
 ○ Set Iron Pipe 1/2" Tag R.C.E. 10301
 ◎ Monuments Found

APPROVED BY THE
 PLANNING COMMISSION
 this 7th day of July, 1958
 Resolution No 58 P 37
 Chairman _____
 Secretary Ernest A. Taylor

CITY OF OCEANSIDE
 PORTION OF LOT 31 MAP 1807
 NORTH CARLESDEN
 SOUTH COAST ENGINEERING SERVICE
 Eng. William Roper
 SURVEY FOR MAP #145

Approved: Alton S. Ruden 7/22/58
 A. L. Ruden - City Engineer
 R.E.N.S. 10162

7/19/58
 LS-145
 150

PORTION LOT 31 MAP 1807
 NORTH CARLESDEN
 SURVEY FOR JOHN WICK