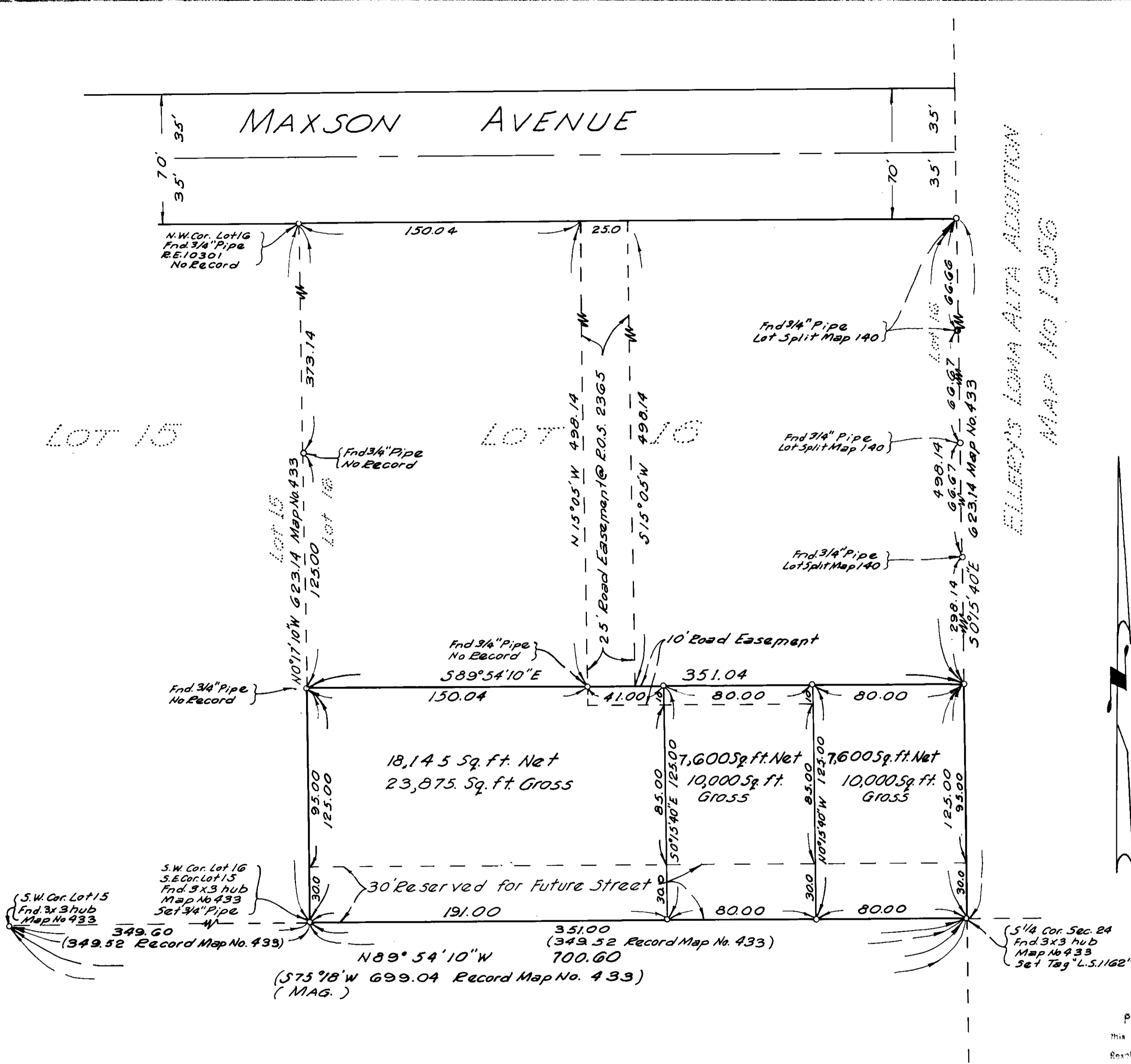


RECORD OF SURVEY
OF

A PORTION OF LOT 16 MAXSON & GRIFFIN'S SUBDIVISION OF TYSON TRACT S 1/2 OF S.W. 1/4 SECTION 24 T.11S, R.5W, S.B.B. & M. MAP No. 433
SAN DIEGO COUNTY, CALIFORNIA



Legend:

- o Indicates set 3/4" pipe with cement plug & brass disc marked "L.S.1162," unless otherwise noted

SCALE: 1" = 40'

THE BASIS OF BEARINGS FOR THIS SURVEY IS the Westerly line of Ellery's Loma Alta Addition as shown on Map 1956-V13-N0°15'40"W

THIS MAP CORRECTLY REPRESENTS A SURVEY MADE BY ME OR UNDER MY DIRECTION IN CONFORMANCE WITH THE REQUIREMENTS OF CHAPTER 15 OF DIVISION 3 OF THE BUSINESS AND PROFESSIONS CODE AT THE REQUEST OF Boone

IN July 19 58
N.P. Browne
N.P. Browne "L.S.1162"

THIS MAP HAS BEEN EXAMINED FOR CONFORMANCE WITH THE REQUIREMENTS OF CHAPTER 15 OF DIVISION 3 OF THE BUSINESS AND PROFESSIONS CODE THIS _____ DAY OF _____ 19____

J.H. Mack
COUNTY SURVEYOR

BY _____ ASSISTANT

APPROVED BY THE PLANNING COMMISSION
This 16th day of June, 1958
Resolution No 58-P34
Chairman _____
Secretary Ernest A. Taylor

approved 1/18/58
Alton S. Ruden

FILE NO. _____ FILED FOR RECORD THIS _____ DAY OF _____ 19____

AT _____ M. IN BOOK _____ OF _____ AT PAGE _____ AT THE REQUEST OF N.P. Browne

FEE: \$ 7.00

Roger N. Howe
COUNTY RECORDER

BY _____ DEPUTY

ELLERY'S LOMA ALTA ADDITION
MAP No 1956