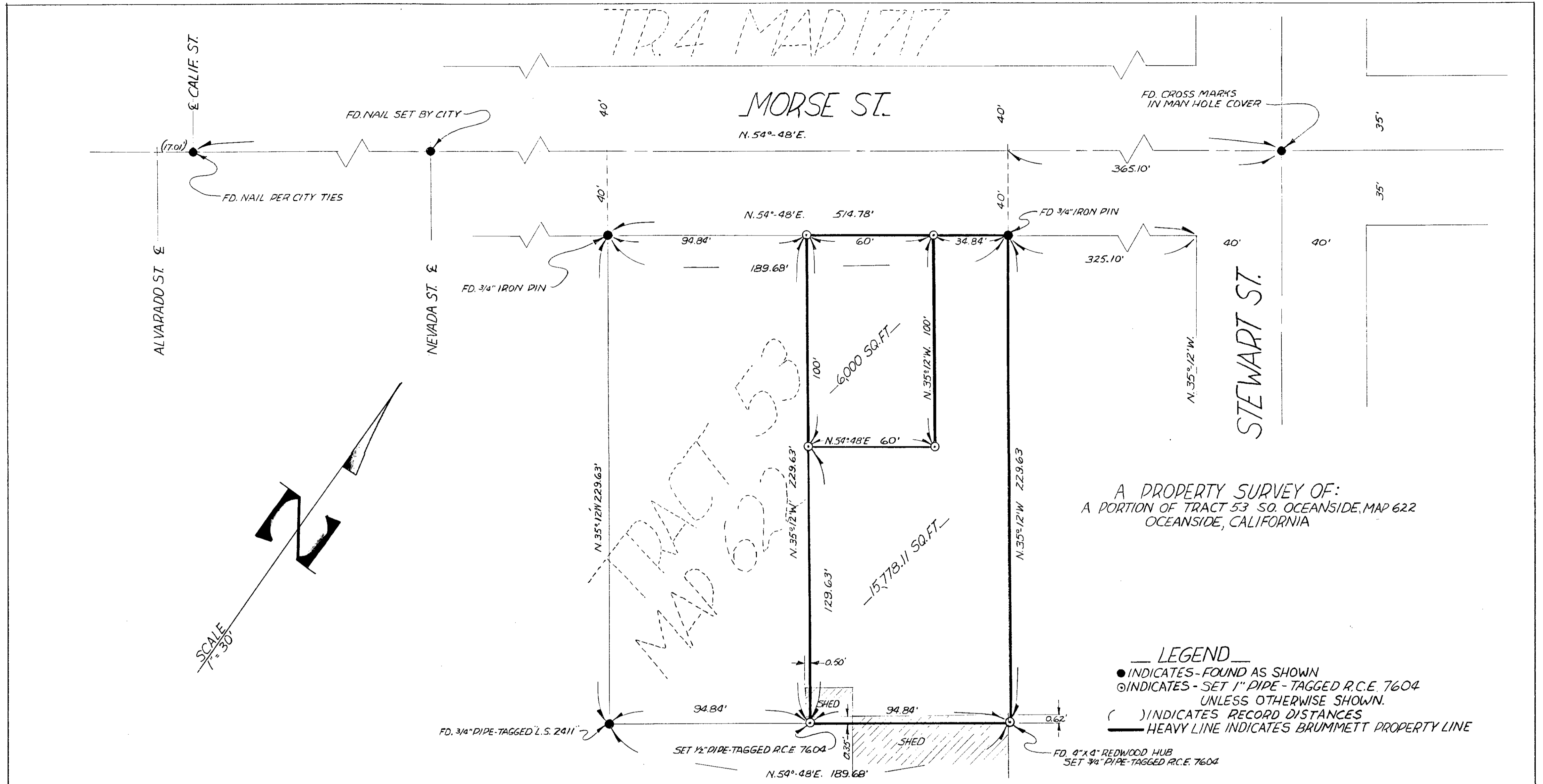


TR 4 MAP 177



A PROPERTY SURVEY OF:
A PORTION OF TRACT 53 SO. OCEANSIDE, MAP 622
OCEANSIDE, CALIFORNIA

- LEGEND**
- INDICATES - FOUND AS SHOWN
 - ⊙ INDICATES - SET 1" PIPE - TAGGED R.C.E. 7604 UNLESS OTHERWISE SHOWN.
 - () INDICATES RECORD DISTANCES
 - HEAVY LINE INDICATES BRUMMETT PROPERTY LINE

BASIS OF BEARING:
E OF MORSE STREET
I.E. N. 54° 48' E.

APPROVED BY THE
PLANNING COMMISSION
this 24th day of June 1957
Resolution No. 57P26
Chairman _____
Secretary *Conrad A. Taylor*

Alton S. Ruden
OCEANSIDE CITY ENGINEER
A.L. RUDEN R.E. 10163

LOT SPLIT		
FOR WILLIAM H. BRUMMETT 1019 MORSE ST. OCEANSIDE, CALIF.		
DRAWN E/G	DRESSELHAUS ENGINEERS <i>Edward P. Dresselhaus</i> DCE 7604	DATE JULY 10, 1958
CHECKED W & M	528 SO. HILL STREET OCEANSIDE, CALIF. SA2-7126	SCALE 1" = 30'
APPROVED		SHEET 1 OF 1 SHEET

SUR 58-65