

TRACT 63 HOTALING LANDS MAP 1717

LOT 71 SOUTH OCEANSIDE
MAP 622
R.O.F.S. 1975

HUNSAKER STREET

KELLY STREET

STREET

RECORD OF SURVEY

OF A PORTION OF TRACT 64 OF
HOTALING LANDS MAP 1717 IN THE
CITY OF OCEANSIDE CALIFORNIA

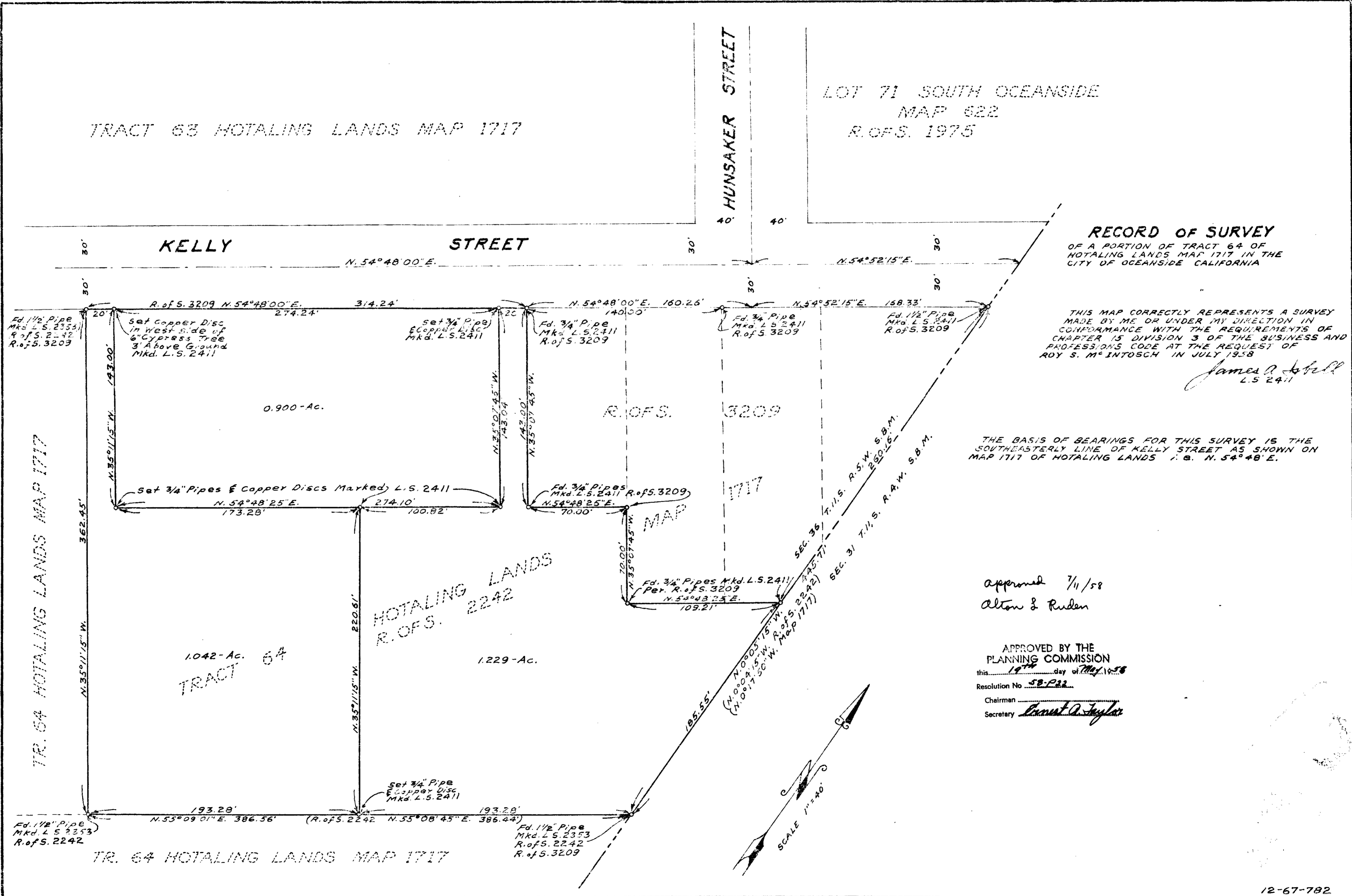
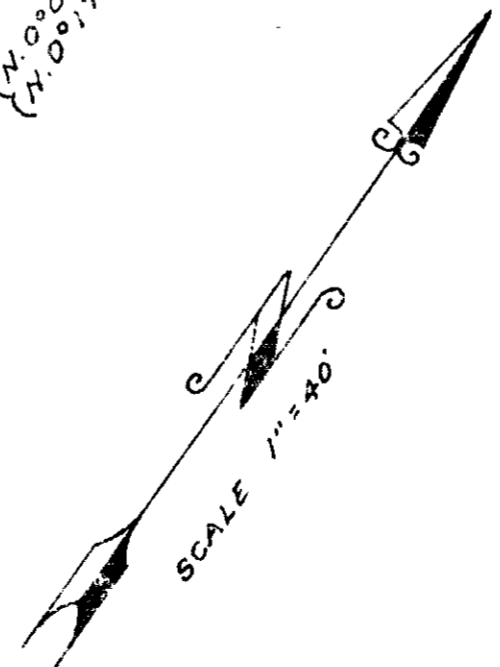
THIS MAP CORRECTLY REPRESENTS A SURVEY
MADE BY ME OR UNDER MY DIRECTION IN
CONFORMANCE WITH THE REQUIREMENTS OF
CHAPTER 15 DIVISION 3 OF THE BUSINESS AND
PROFESSIONS CODE AT THE REQUEST OF
ROY S. MINTOSCH IN JULY 1958

James A. Bell
L.S. 2411

THE BASIS OF BEARINGS FOR THIS SURVEY IS THE
SOUTHEASTERLY LINE OF KELLY STREET AS SHOWN ON
MAP 1717 OF HOTALING LANDS I. E. N. 54° 48' E.

approved 7/11/58
Alton S. Ruden

APPROVED BY THE
PLANNING COMMISSION
this 19th day of May 1958
Resolution No. 58-P22
Chairman
Secretary Ernest A. Taylor



TRACT 64 HOTALING LANDS MAP 1717