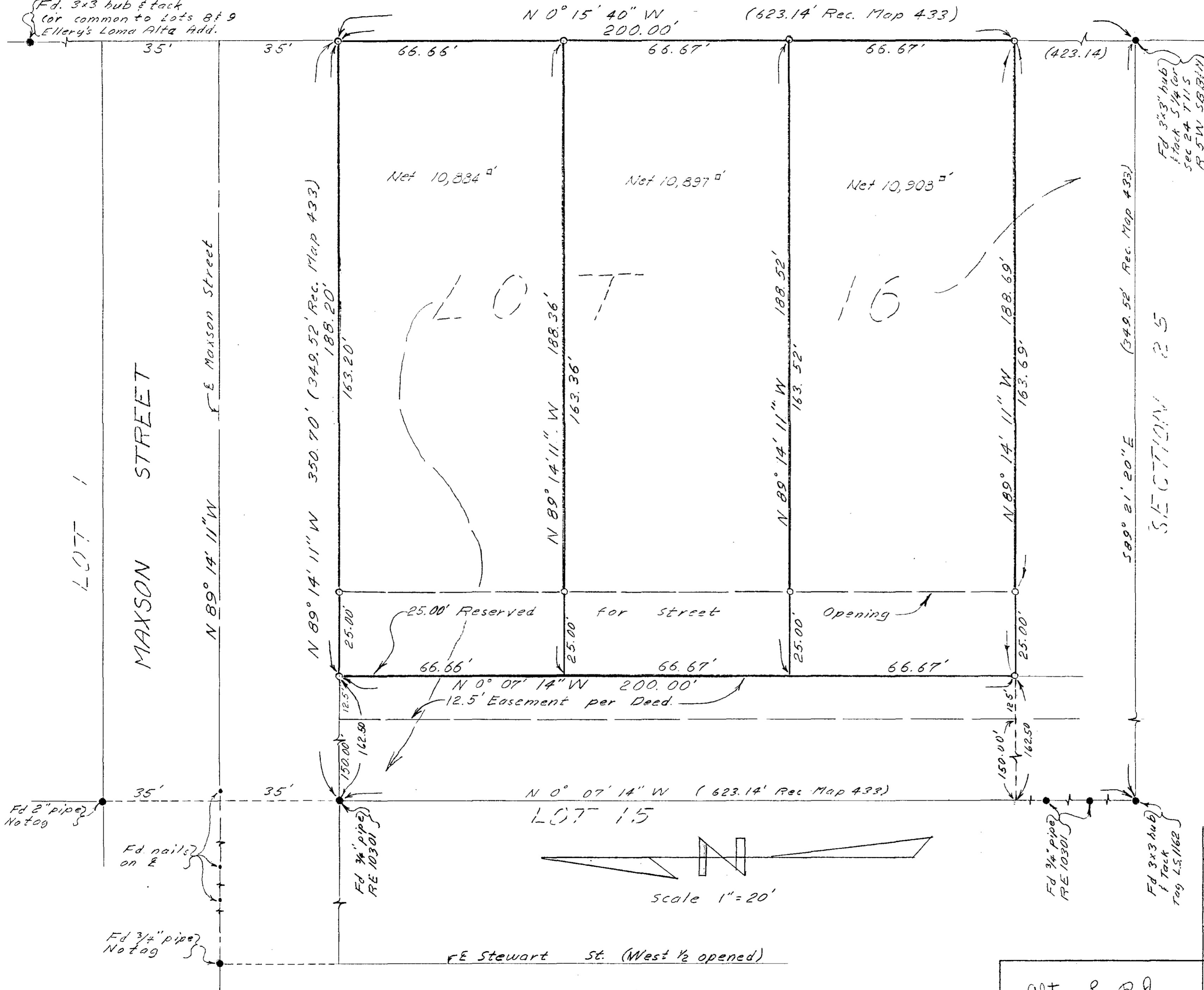


ELLERY'S LOMA ALTA ADDITION

Fd. 3x3 hub & tack for common to Lots 8 & 9 Ellery's Loma Alta Add.

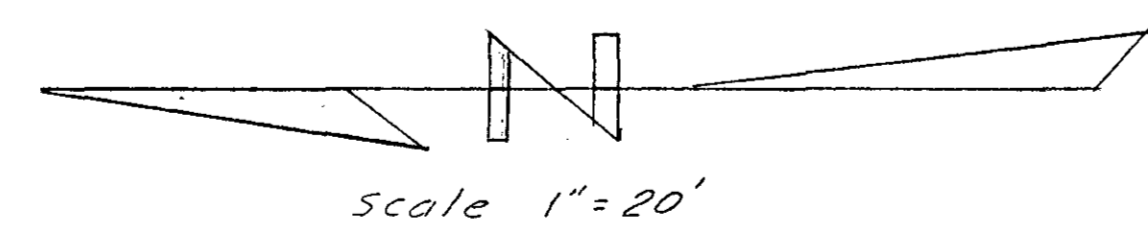
A PROPERTY SURVEY OF:
A portion of Lot 16 of Maxson and Griffins Subdivision as shown on Map 433 and described as follows:
The Northerly 200.00 feet, Excepting the Westerly 162.50 feet thereof.



LEGEND

- Indicates - Found as shown.
- Indicates - Set 3/4" pipe tagged R.E. 7604 unless otherwise shown.
- () Indicates - Record distance or bearing.
- Heavy Line indicates McNelis property line.

BASIS OF BEARING:
The westerly line of Ellery's Loma Alta Addition as shown on Map No. 1956 i.e. N 0° 15' 40" W



LOT SPLIT		
For FRED E. MCNELIS		
936 So. Pacific Oceanside, Calif.		
Drawn: <i>W.R.M.</i>	DRESSELHAUS ENGINEERS	Date: 12-17-57
Checked:	<i>Donald Dresselhaus</i> RE 7604	Scale: 1" = 20'
Approved: 6-20-1958	528 South Hill Street Oceanside California Saratoga 2-2126	Sheet 1 of 1

Alton S. Ruden
Oceanside City Engineer
A.L. Ruden RE. 10163