

RECORD OF SURVEY

OF A PORTION OF LOT 6 OF BLOCK A OF ELLERY'S LOMA ALTA ADDITION TO OCEANSIDE, MAP N<sup>o</sup> 1956, SAID PORTION BEING THE 1.007-ACRE PARCEL OF L.S. MAP N<sup>o</sup> 307

THIS MAP CORRECTLY REPRESENTS A SURVEY MADE BY ME OR UNDER MY DIRECTION, IN CONFORMANCE WITH THE REQUIREMENTS OF CHAPTER 15 DIVISION 3 OF THE BUSINESS AND PROFESSIONS CODE AT THE REQUEST OF FLORIS LEGLER, IN MARCH 1958

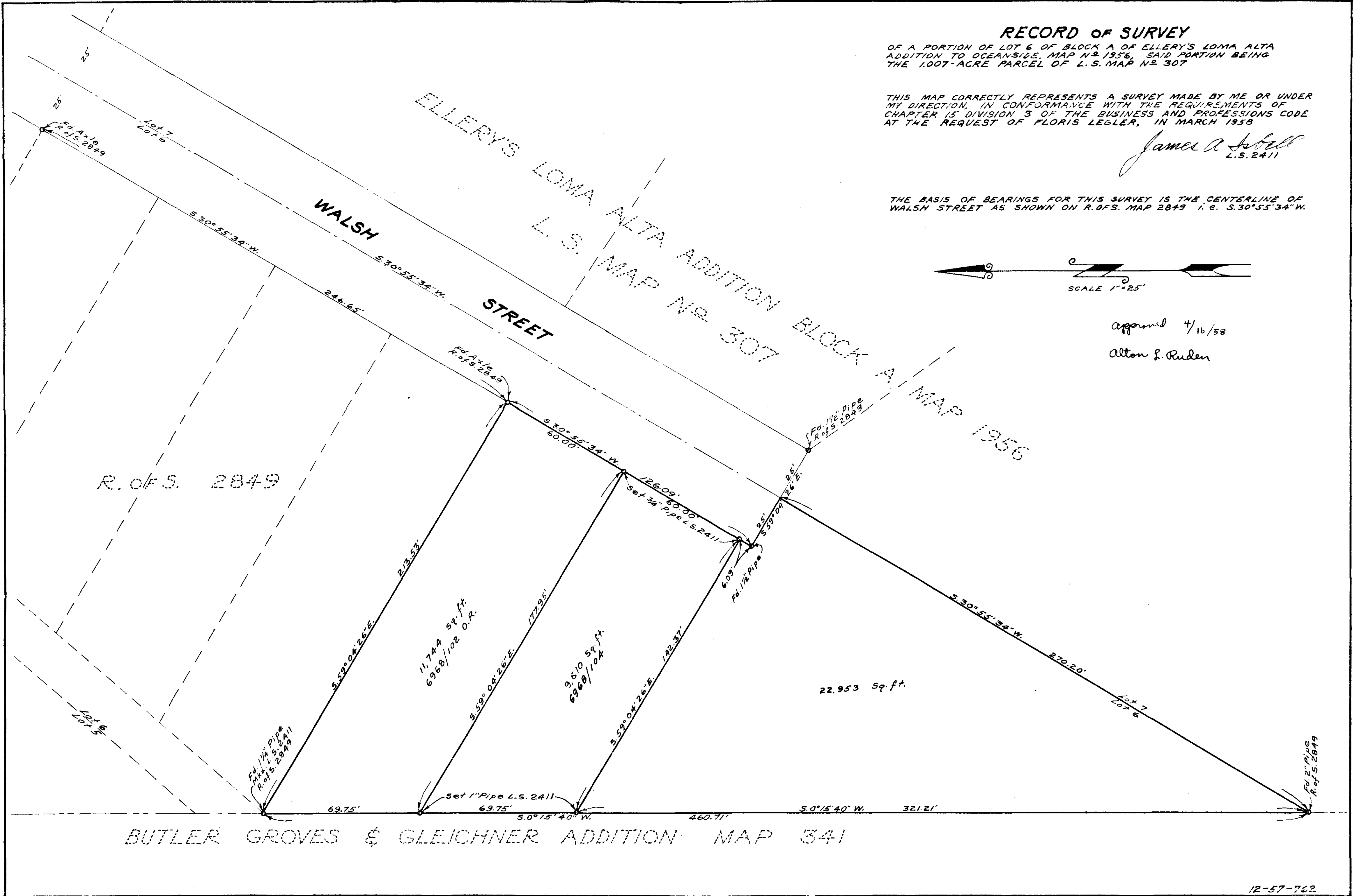
*James A. Stell*  
L.S. 2411

THE BASIS OF BEARINGS FOR THIS SURVEY IS THE CENTERLINE OF WALSH STREET AS SHOWN ON R.O.F.S. MAP 2849 i. e. S. 30° 55' 34" W.



Approved 4/16/58

Alton S. Ruden



12-57-762