

RECORD OF SURVEY
 OF A PORTION OF THE N.W. 1/4 OF
 THE N.E. 1/4 OF SEC. 25, T.11S. R.5.W. S.B.M.
 S.B.B. & M. OCEANSIDE, CALIFORNIA

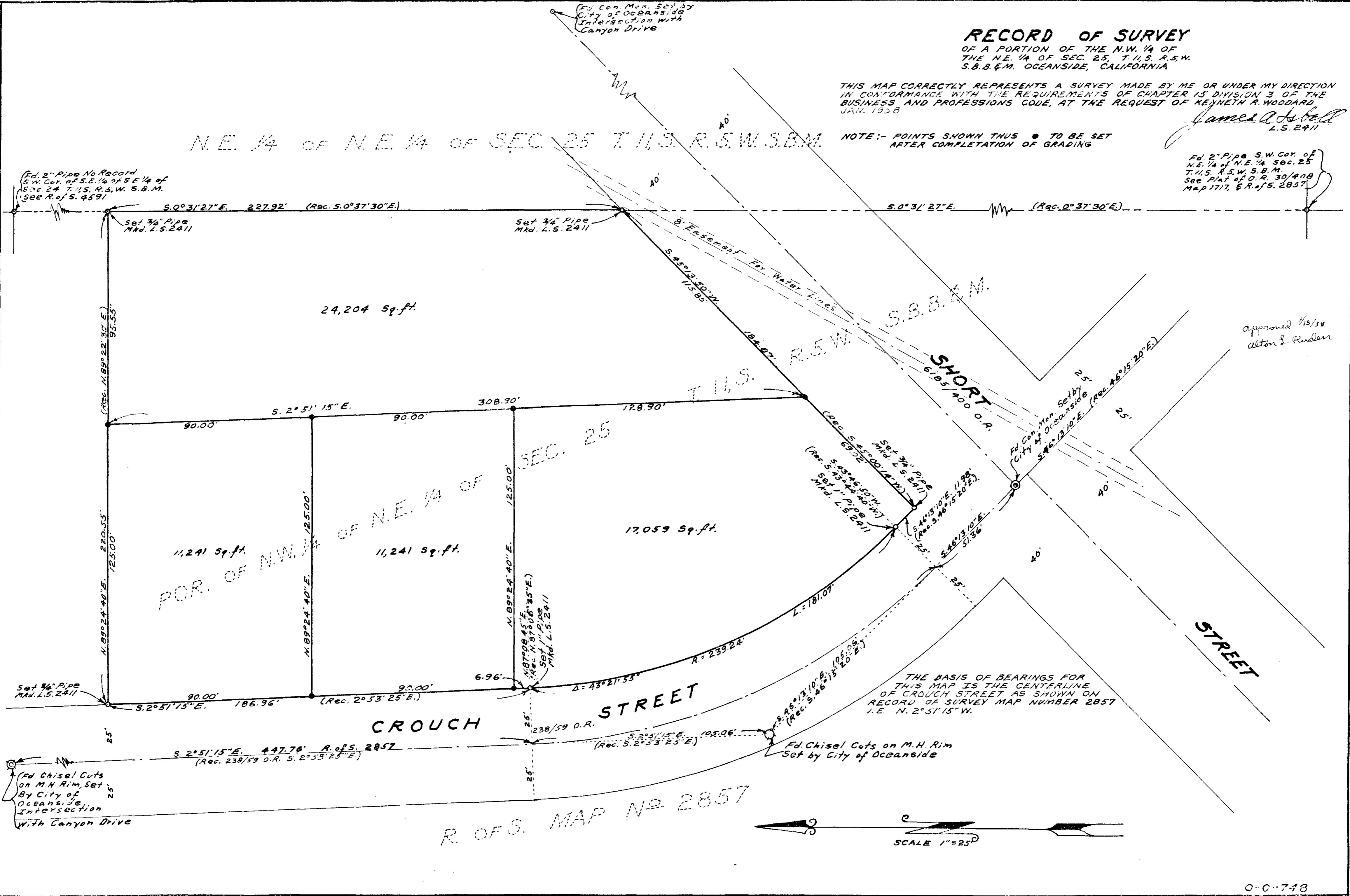
THIS MAP CORRECTLY REPRESENTS A SURVEY MADE BY ME OR UNDER MY DIRECTION
 IN CONFORMANCE WITH THE REQUIREMENTS OF CHAPTER 15 DIVISION 3 OF THE
 BUSINESS AND PROFESSIONS CODE, AT THE REQUEST OF KEENEY R. WOODARD
 JAN. 1958

James A. DeBell
 L.S. 2411

N.E. 1/4 OF N.E. 1/4 OF SEC. 25 T.11S. R.5.W. S.B.M.

NOTE:- POINTS SHOWN THUS ● TO BE SET
 AFTER COMPLETION OF GRADING

Fd. 2" Pipe S.W. Cor. of
 N.E. 1/4 of N.E. 1/4 Sec. 25
 T.11S. R.5.W. S.B.M.
 See Plat of O.R. 30/408
 Map 1717, & R. of S. 2857



Approved 1/15/58
 Alton S. Ruden

THE BASIS OF BEARINGS FOR
 THIS MAP IS THE CENTERLINE
 OF CROUCH STREET AS SHOWN ON
 RECORD OF SURVEY MAP NUMBER 2857
 I.E. N. 2° 51' 15" W.

