

RECORD OF SURVEY

OF A PORTION OF LOT 2 OF BLOCK C OF ELLERY'S LOMA ALTA ADDITION MAP 1956

THIS MAP CORRECTLY REPRESENTS A SURVEY MADE BY ME OR UNDER MY DIRECTION IN CONFORMANCE WITH THE REQUIREMENTS OF CHAPTER 15 DIVISION 3 OF THE BUSINESS AND PROFESSIONS CODE AT THE REQUEST OF H.L. SANDBERG FEB. 1958

James A. Isbell  
L.S. 2411

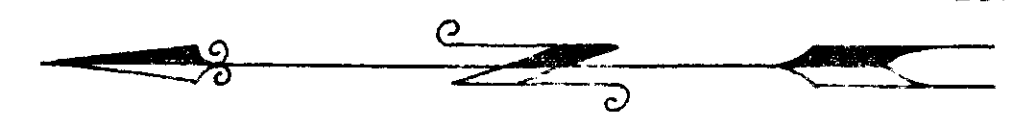
THIS MAP HAS BEEN EXAMINED FOR CONFORMANCE WITH THE REQUIREMENTS OF CHAPTER 15 OF DIVISION 3 OF THE BUSINESS AND PROFESSIONS CODE THIS \_\_\_\_\_ DAY OF \_\_\_\_\_ 1958

J.H. MACK  
COUNTY SURVEYOR

BY \_\_\_\_\_ ASSISTANT

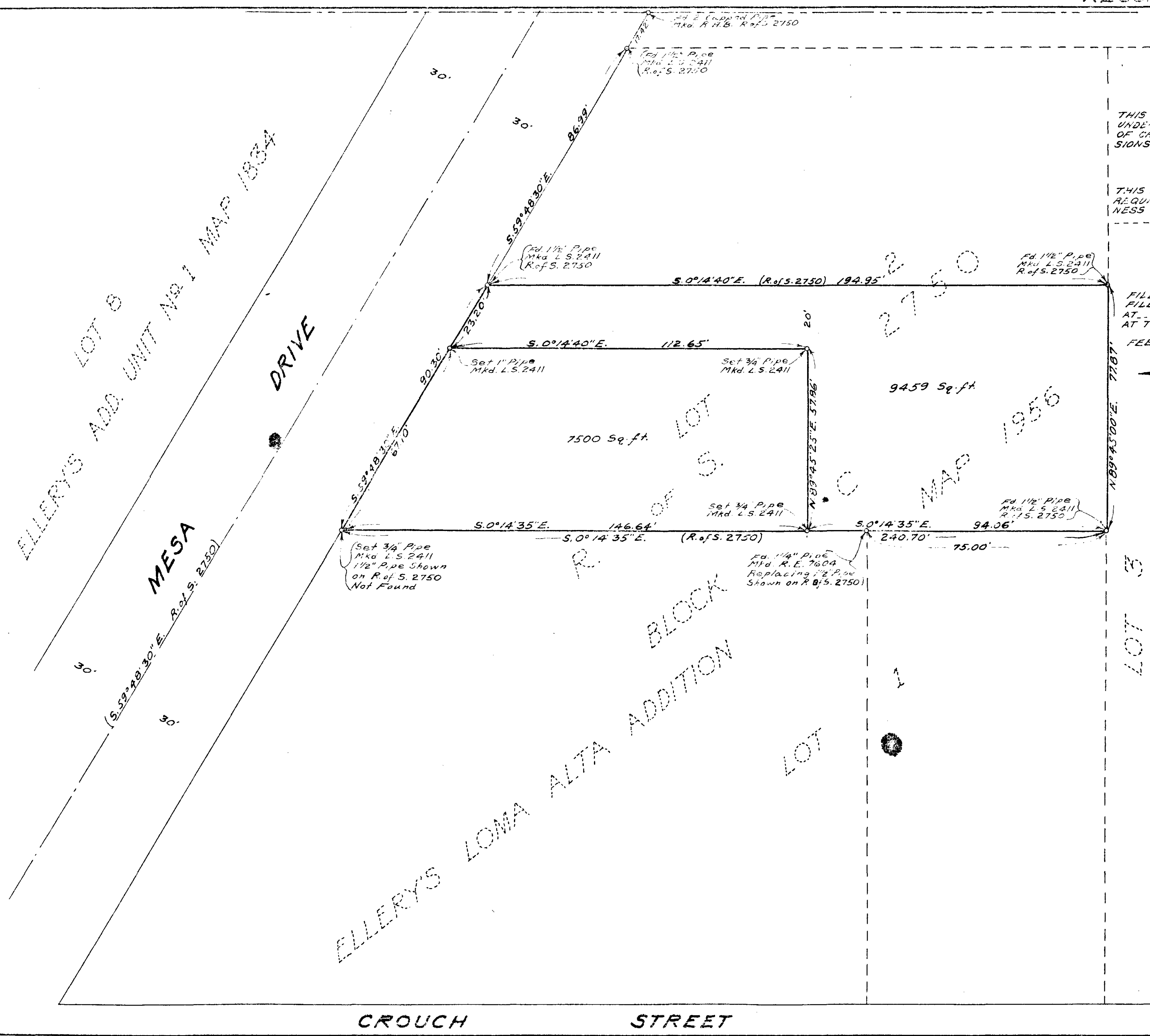
FILE NO. \_\_\_\_\_  
FILED FOR RECORD THIS \_\_\_\_\_ DAY OF \_\_\_\_\_ 1958  
AT \_\_\_\_\_ M. IN BOOK \_\_\_\_\_ OF \_\_\_\_\_ AT PAGE \_\_\_\_\_  
AT THE REQUEST OF JAMES A. ISBELL, ROGER N. HOWE  
COUNTY RECORDER  
BY \_\_\_\_\_ DEPUTY

FEE \$5.00



SCALE: 1" = 20'

THE BASIS OF BEARINGS FOR THIS SURVEY IS CENTERLINE OF MESA DRIVE AS SHOWN ON RECORD MAP 1956 I. E. S. 59° 48' 30" E.



CROUCH STREET

LOT 3

LOT 1

ELLERY'S LOMA ALTA ADDITION

ELLERY'S ADD. UNIT No. 1 MAP 1834  
MESA DRIVE  
LOT 8