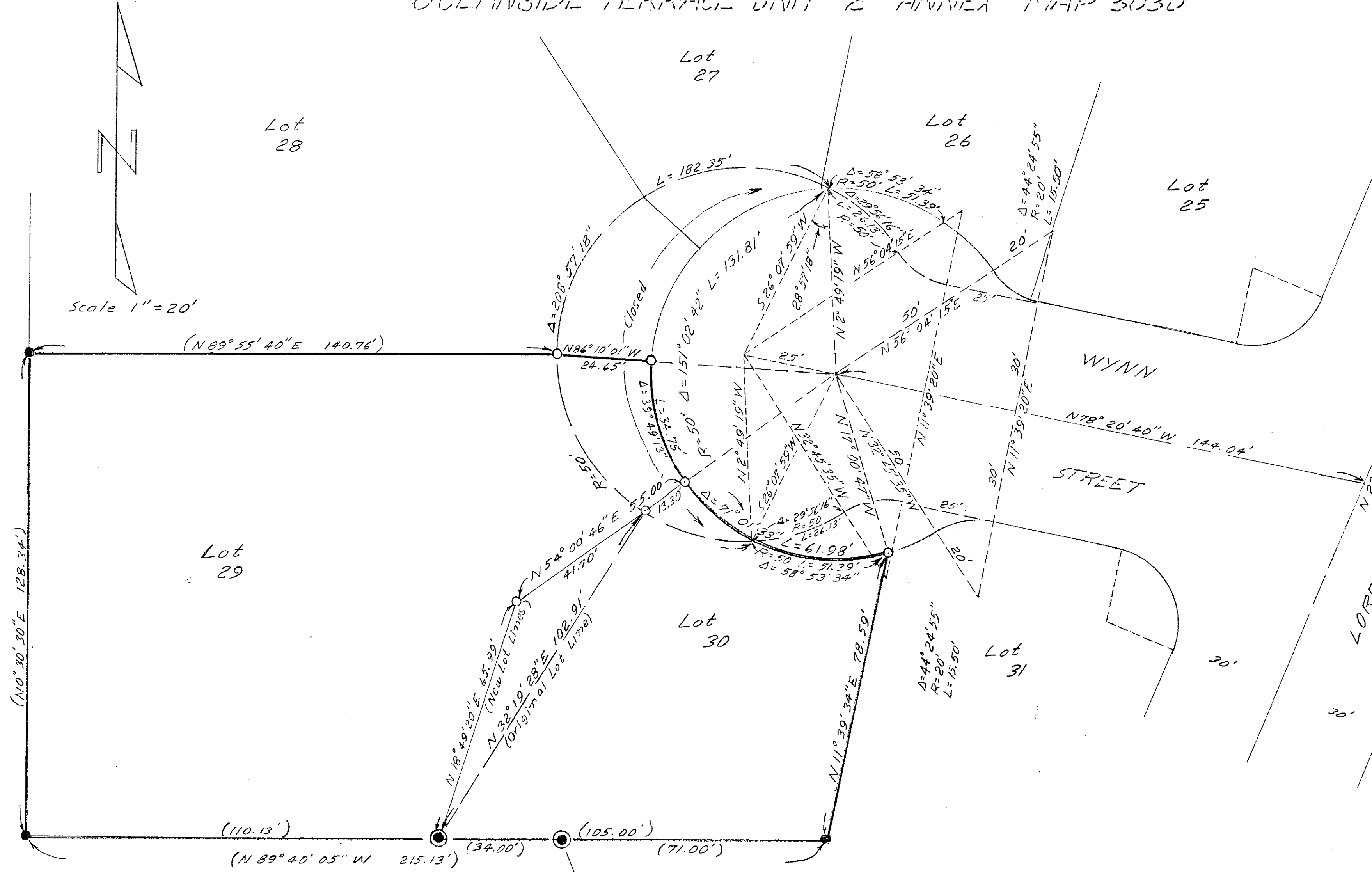


OCEANSIDE TERRACE UNIT #2 ANNEX MAP 3030

Relocation of Lot line
common to Lots 29 &
30, Oceanside Terrace
Unit No. 2 Annex, Map
3030.



Scale 1" = 20'

- Indicates - Set 2"x2"x12" Hub with tack
- Indicates - 1/2"x12" Pipe with tag RE 1534
- ⊙ Indicates - 2"x24" Pipe with tag RE.1534

LOT LINE RELOCATION		
FOR		
J & J ENTERPRISES		
417 THIRD ST. OCEANSIDE CALIF.		
DRAWN WJD	DRESSELHAUS ENGINEERS	DATE 3/14/57
CHECKED	<i>[Signature]</i>	SCALE 1" = 20'
APPROVED DFD	RE. 7604 528 South Hill Street Oceanside California SA 2-2126	SHEET 1 of 1

Alton E. Parken
Oceanside City Engineer
A.E. Ruden RE.10163