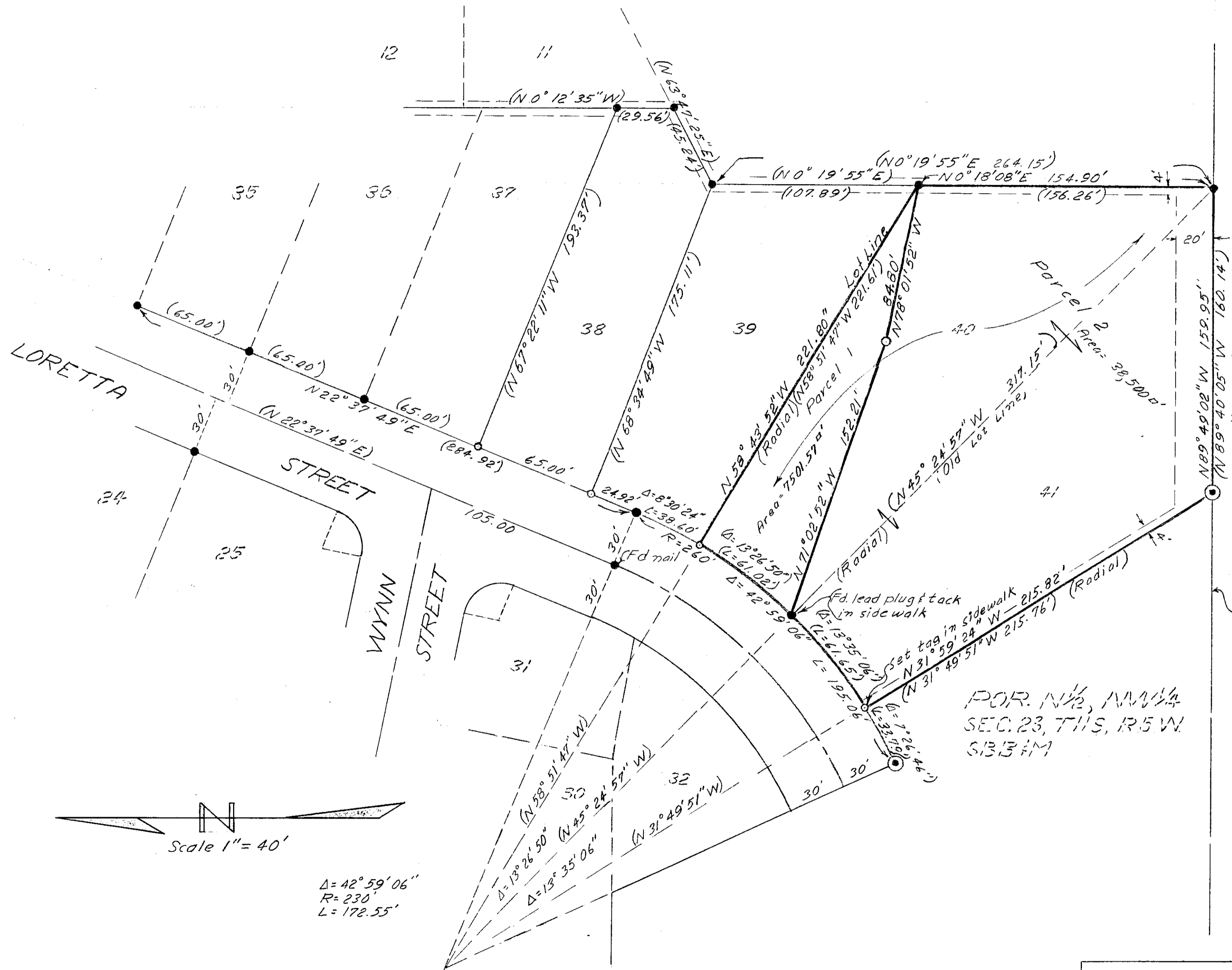


OCEANSIDE TERRACE UNIT NO. 2 ANNEX MAP 3030

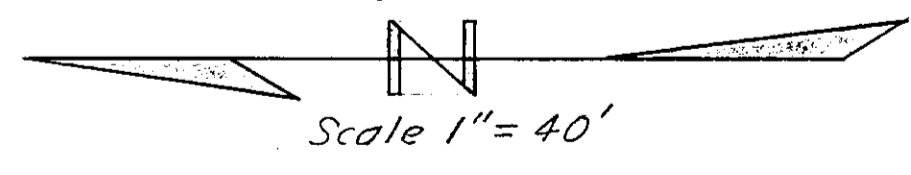
A PROPERTY SURVEY OF:
 Lots 38, 39, 40, 41 & the relocation
 of the common line between
 Lots 40 & 41, All in Oceanside
 Terrace Unit No 2 Annex as shown
 on Map No 3030.



LEGEND
 ● Indicates found 3/4" pipe tagged R.E. 1534 unless otherwise shown.
 ○ Indicates found 2" pipe tagged R.E. 1534.
 ○ Indicates Set 3/4" pipe with concrete plug & tagged R.E. 7604 unless otherwise shown.
 () Indicates Record from Map 3030.

The basis of bearing for this survey is the southeasterly line of Loretta Street as shown on Map 3030 i.e. N 22° 37' 49" E.

FOR N 1/2, NW 1/4 SEC. 23, T11S, R5W S1331M



LOT LINE RELOCATION		
FOR J & J ENTERPRISES		
417 THIRD STREET OCEANSIDE, CALIF.		
Drawn:	DRESSELHAUS ENGINEERS	Date:
WJM	David J. Dresselhaus	4/25/57
Checked:	R.E. 7604	Scale:
DTD		1" = 40'
Approved:	528 South Hill Street Oceanside, California Phone SAratoga 2-2126	Sheet:
		1 of 1

Alton & Ruden 4/2/57
 Oceanside City Engineer
 A.L. Ruden R.E. 10163

LS-107 J & J Enterprises