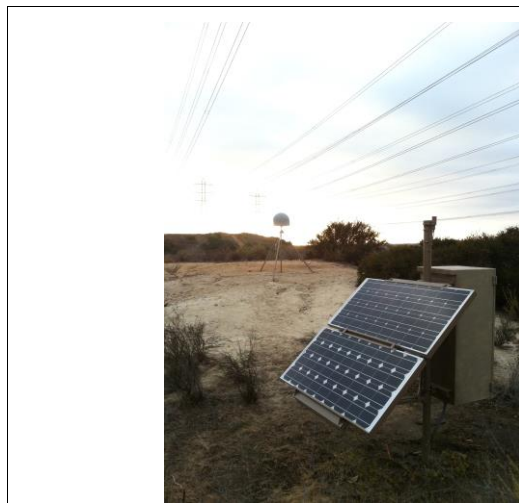


CONTROL SURVEY MONUMENT DATA AND RECOVERY SHEET

City of Oceanside Geodetic Control Network



Number: **3001**
 Name: **CGPS CLBD**



Looking East

Monument Location



Vicinity Map

Monument Description: GPS Useable: CGPS CORS STATION		Ref: SOPAC Datasheet for Monument Attributes
Stamping:		
Center Mark:		Depth:
Recovery By:	Date:	Lid:



Location:

On top of hill (+/-) 670' north along Cannon Road and (+/-) 190' east of Cannon Road

California Geodetic Coordinates of 1983				CCS 83, Zone 6 Coordinates		NAD83(NSRS2007)		
Latitude:	Deg.	Min.	Seconds	Northing:	Meters	U.S. Survey Feet	Epoch:	2011.00
	33	8	7.37604		607,936.458		1,994,538.20	FGDC Acc.:
Longitude:	117	18	39.46300	Easting:	1,901,007.054	6,236,887.31	Survey by:	RBF
Ellipsoid Height (m):	21.343			Combined Factor:	0.99995676		Adj. Date:	Oct 2013

California Orthometric Height (COH88)							
Datum	Meters	U.S. Survey Feet	Survey By	FGDC Acc.	Adj. Date	COH88	Geoid12A
NAVD88	55.898	183.39	RBF	2 cm	Oct 2013	Derived	-34.563