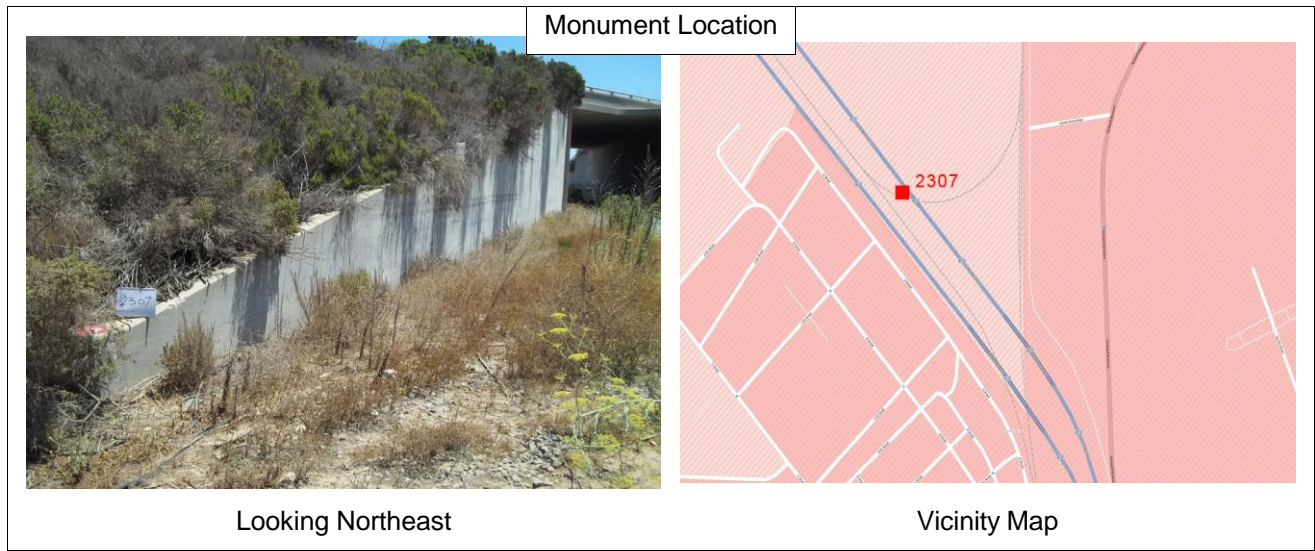


CONTROL SURVEY MONUMENT DATA AND RECOVERY SHEET

City of Oceanside Geodetic Control Network



Number: **2307** **FOUND**
 Name: **I-5 & LEMON GROVE RD.**



Monument Description: 3.5" Brass Disk in Concrete Wall		GPS Useable: Yes	*might have to walk down the tracks to get to point; Ref: NGS Datasheet PID DX3431	
Stamping:	K 1307 1978			
Center Mark:	Cross	Depth:	0	
Recovery By:	RBF	Date:	July 2013	Lid:



Location:
 On top of north concrete wall, on the west side of I-5 freeway. Access through freeway exit at Vandergrit Boulevard and take north to Lemon Grove Road

California Geodetic Coordinates of 1983			CCS 83, Zone 6 Coordinates		NAD83(NSRS2007)	
Latitude:	Deg. Min. Seconds	Northing:	Meters	U.S. Survey Feet		
	33 13 39.76370		618,260.866	2,028,410.86		
Longitude:		Easting:				
	117 23 50.47777		1,893,059.155	6,210,811.58		
Ellipsoid Height (m):	-21.835	Combined Factor:	0.99995928			
California Orthometric Height (COH88)						
Datum	Meters	U.S. Survey Feet	Survey By	FGDC Acc.	Adj. Date	COH88 Geoid12A
NAVD88	12.829	42.09	RBF	1st/Class I	Oct 2013	Published -34.671