

CONTROL SURVEY MONUMENT DATA AND RECOVERY SHEET

City of Oceanside Geodetic Control Network



Number: **2005** **FOUND**
 Name: **CASSIDY ST. & SOUTH CLEMENTINE ST.**



Monument Description: 1.375" Brass Disk in Curb		GPS Useable: Yes	Obstructions to Visibility: power pole to the northwest
Stamping: COS BM F44			
Center Mark: None		Depth:	0
Recovery By: RBF	Date: July 2013	Lid:	



Location:
 On top of west curb of South Clementine Street (+/-) 40' from apparent intersection of Cassidy Street and South Clementine Street

California Geodetic Coordinates of 1983			CCS 83, Zone 6 Coordinates		NAD83(NSRS2007)	
	Deg.	Min. Seconds	Meters	U.S. Survey Feet	Epoch:	
Latitude:	33	10 37.84251	612,618.295	2,009,898.52	2011.00	
Longitude:	117	21 32.91761	1,896,560.927	6,222,300.31	FGDC Acc.:	1 cm
Ellipsoid Height (m):		-18.118	Combined Factor:	0.99996071	Survey by:	RBF
					Adj. Date:	Oct 2013

California Orthometric Height (COH88)							
Datum	Meters	U.S. Survey Feet	Survey By	FGDC Acc.	Adj. Date	COH88	Geoid12A
NAVD88	16.564	54.43	RBF	2 cm	Oct 2013	Derived	-34.689

041674

CORNER RECORD

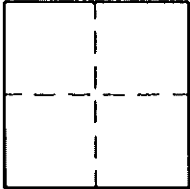
Agency Index _____

Document Number 153-222-11

City of OCEANSIDE

County of SAN DIEGO, California

Brief Legal Description CITY OF OCEANSIDE GEODETIC CONTROL POINT #2005 AT THE NORTHWEST CORNER OF CASSIDY STREET AND SOUTH CLEMENTINE STREET.



CORNER TYPE

Government Corner Control
Meander Property
Rancho Other

COORDINATES (OPTIONAL)

N. _____ E. _____
Elevation _____
Units Metric U.S. Survey Foot
Horizontal Datum _____
Zone _____ Epoch Date _____
Vertical Datum _____

Date of Survey 2/28/18

Complies with Public Resources Code §§8801-8819
 Complies with Public Resources Code §§8890-8902

PLS Act Ref: 8765 (d) 8771 8773 Other:

Corner/Monument: Left as found Established Rebuilt Pre-Construction
 Found and tagged Reestablished Referenced Post-Construction

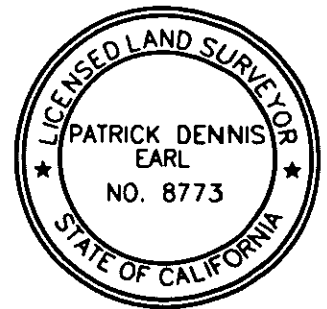
Narrative of corner identified and monument as found, set, reset, replaced, or removed:
 See sheet #2 for description(s):

LEGEND

- SET MONUMENT AS NOTED
- FOUND TIE AS NOTED

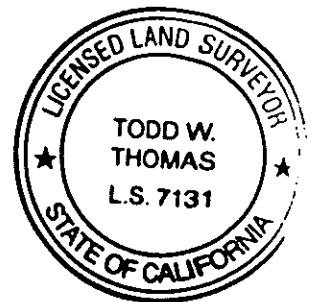
SURVEYOR'S STATEMENT

This Corner Record was prepared by me or under my direction in conformance with the Professional Land Surveyors' Act on 3/2/2018
Signed [Signature] P.L.S. or R.C.E. No. 8773



COUNTY SURVEYORS STATEMENT

This Corner Record was received 3/20/2018
and examined and filed APR 03 2018
Signed [Signature] P.L.S. or R.C.E. No. 7131
Title For the County Surveyor



County Surveyor's Comment _____

LEGEND

- ① SET LEAD, NAIL & TAG STAMPED "LS 8773" PER TIE DISTANCES ON R1.
- ② FOUND LEAD, NAIL & TAG STAMPED "LS8773 TIE" IN TOP OF CURB PER R1.
- R1 CORNER RECORD CR#41442 (MEASURED & RECORD DATA)
- PT 222 WAS A 1-3/8" PUNCHED BRASS DISK STAMPED "COS BM F44" PER R1, DESTROYED BY CONSTRUCTION, ALSO DESCRIBED AS PT #2005 PER RECORD OF SURVEY 21787, FILE NO. 2014-0361129.

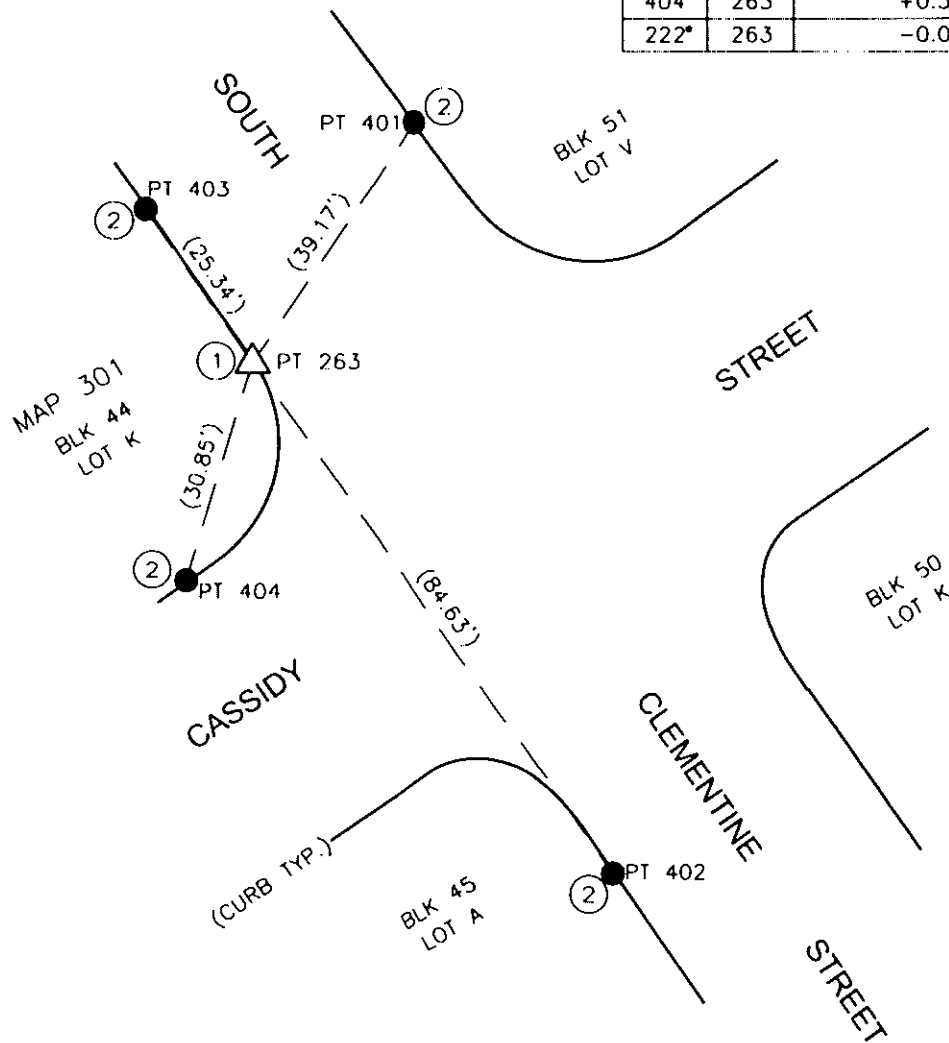


NO SCALE

NOTE: TWO CLOSED LEVEL LOOPS WERE RUN THROUGH ALL POINTS SHOWN HEREON.
EQUIPMENT USED: LEICA TPS 1203 TOTAL STATION, LEICA DNA 10 DIGITAL LEVEL & DIGITAL BARCODE STAFF

DIFFERENTIAL LEVELING OBSERVATIONS

FROM	TO	ELEVATION DIFFERENCE
401	263	-0.525
402	263	+0.112
403	263	+0.144
404	263	+0.553
222*	263	-0.052



NOTE: TIES ARE NOT TANGENT UNLESS DESIGNATED BY A T/O SYMBOL. ALL TIES NOT SO SHOWN ARE SWING TIES.

041442

CORNER RECORD

Agency Index _____

Document Number 153-227-11 ~~153-222-11~~

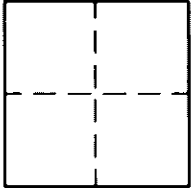
City of OCEANSIDE

County of SAN DIEGO, California

Brief Legal Description CITY OF OCEANSIDE GEODETIC CONTROL POINT #2005 AT THE NORTHWEST CORNER OF CASSIDY STREET AND SOUTH CLEMENTINE STREET.

CORNER TYPE

COORDINATES (OPTIONAL)



Government Corner Control
Meander Property
Rancho Other

N. _____ E. _____
 Elevation _____
 Units Metric U.S. Survey Foot
 Horizontal Datum _____
Zone _____ Epoch Date _____
Vertical Datum _____

Date of Survey 11/29/17

Complies with Public Resources Code §§8801-8819
 Complies with Public Resources Code §§8890-8902

PLS Act Ref: 8765 (d) 8771 8773 Other:

Corner/Monument: Left as found Established Rebuilt Pre-Construction
 Found and tagged Reestablished Referenced Post-Construction

Narrative of corner identified and monument as found, set, reset, replaced, or removed:

See sheet #2 for description(s):

LEGEND

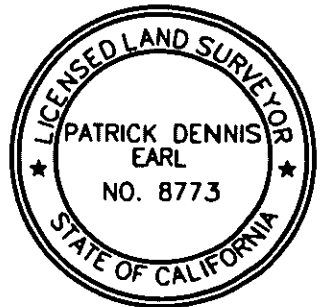
FOUND MONUMENT AS NOTED

SET TIE AS NOTED

SURVEYORS STATEMENT

This Corner Record was prepared by me or under my direction in conformance with the Professional Land Surveyors' Act on 1/9/2018

Signed Patrick Earl P.L.S. or R.C.E. No. 8773



COUNTY SURVEYORS STATEMENT

This Corner Record was received 1/23/2018

and examined and filed MAR 02 2018

Signed Todd W. Thomas P.L.S. or R.C.E. No. 7131

Title For the County Surveyor



County Surveyor's Comment _____

LEGEND

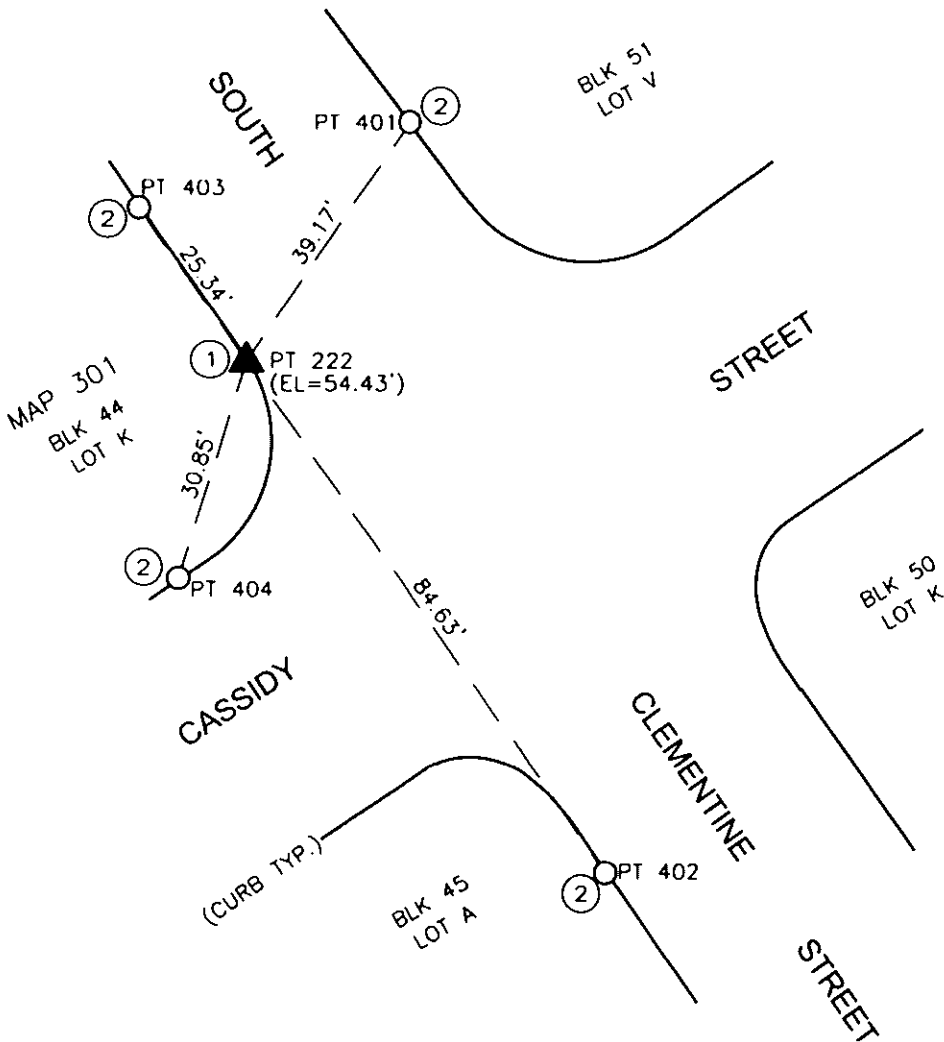
- ① FOUND 1-3/8" PUNCHED BRASS DISK STAMPED "COS BM F44" PER R1 IN TOP OF CURB. TO BE DESTROYED BY CONSTRUCTION.
- ② SET LEAD, NAIL & TAG STAMPED "LS8773 TIE" IN TOP OF CURB.
- R1 RECORD OF SURVEY 21787, FILE NO. 2014-0361129 (RECORD DATA)



NOTE: TWO CLOSED LEVEL LOOPS WERE RUN THROUGH ALL POINTS SHOWN HEREON.
 EQUIPMENT USED: LEICA TPS 1203 TOTAL STATION, LEICA DNA 10 DIGITAL LEVEL & DIGITAL BARCODE STAFF

DIFFERENTIAL LEVELING OBSERVATIONS

FROM	TO	ELEVATION DIFFERENCE
222	401	+0.473
222	402	-0.164
222	403	-0.196
222	404	-0.605



NOTE: TIES ARE NOT TANGENT UNLESS DESIGNATED BY A T/O SYMBOL. ALL TIES NOT SO SHOWN ARE SWING TIES.