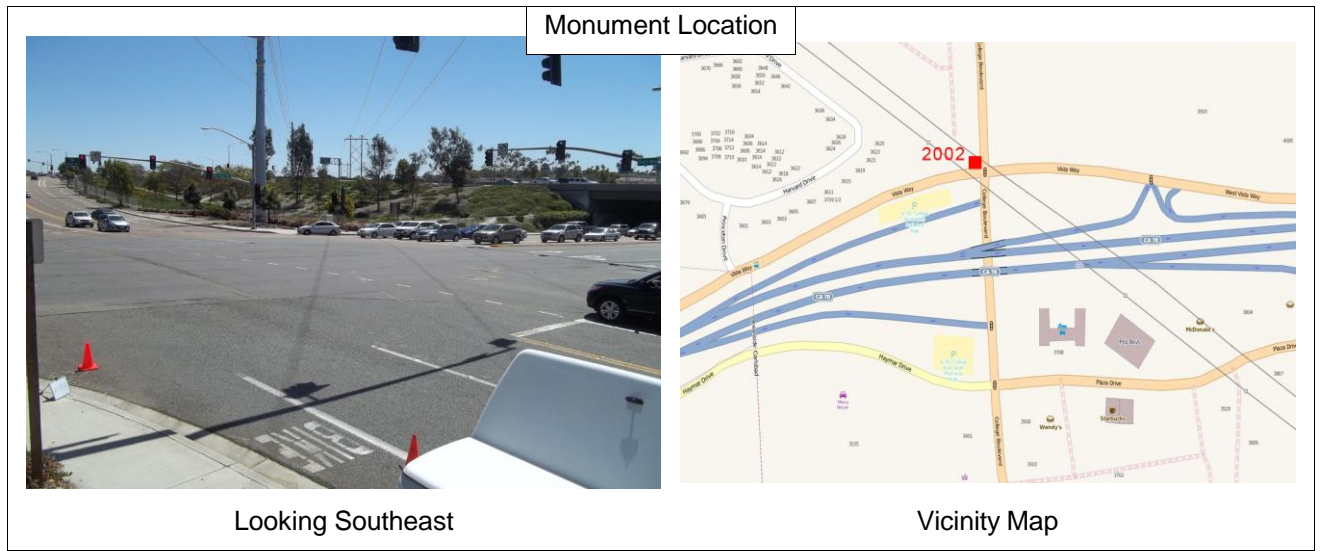


# CONTROL SURVEY MONUMENT DATA AND RECOVERY SHEET

## City of Oceanside Geodetic Control Network



Number: **2002** **FOUND**  
 Name: **VISTA WAY & COLLEGE BLVD.**



<b>Monument Description:</b> 2.25" Brass Disk in Curb		<b>GPS Useable:</b> Yes	<b>Ref:</b> Caltrans Survey Request SR12-197
<b>Stamping:</b> CALTRANS 78-3.3			
<b>Center Mark:</b> None		<b>Depth:</b>	0
<b>Recovery By:</b> RBF	<b>Date:</b> May 2013	<b>Lid:</b>	



**Location:**  
 On top of northwest curb return of Vista Way and College Boulevard

California Geodetic Coordinates of 1983			CCS 83, Zone 6 Coordinates		NAD83(NSRS2007)		
	Deg.	Min.	Seconds	Meters	U.S. Survey Feet	Epoch:	2011.00
Latitude:	33	11	2.78600	613,326.511	2,012,222.06	FGDC Acc.:	1 cm
Longitude:	117	17	48.27389	1,902,387.978	6,241,417.89	Survey by:	RBF
Ellipsoid Height (m):			23.666	Combined Factor:	0.99995383	Adj. Date:	Oct 2013

California Orthometric Height (COH88)							
Datum	Meters	U.S. Survey Feet	Survey By	FGDC Acc.	Adj. Date	COH88	Geoid12A
NAVD88	57.927	190.05	RBF	-	Oct 2013	Published	-34.279