

CONTROL SURVEY MONUMENT DATA AND RECOVERY SHEET

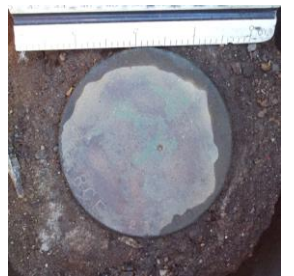
City of Oceanside Geodetic Control Network



Number: **1066** **FOUND**
 Name: **TEMPLE HEIGHTS & OCEANSIDE BLVD.**



Monument Description: GPS Useable: Yes 3.5" Brass Disk in Monument Well			
Stamping: RCE 23280			
Center Mark: Punch		Depth: -0.39	
Recovery By: RBF	Date: July 2013	Lid: Monument	



Location:
 Monument Well at the end of curve (EC) in the centerline of Temple Heights (+/-)180' northerly of Oceanside Boulevard at strip mall entrance

California Geodetic Coordinates of 1983				CCS 83, Zone 6 Coordinates		NAD83(NSRS2007)		
Latitude:	Deg.	Min.	Seconds	Northing:	Meters	U.S. Survey Feet	Epoch:	2011.00
	33	13	1.94030		616,973.147		2,024,186.07	FGDC Acc.:
Longitude:	117 16		15.18190	Easting:	1,904,835.262	6,249,447.02	Survey by:	RBF
	Ellipsoid Height (m):		75.281		Combined Factor:		0.99994439	Adj. Date:
California Orthometric Height (COH88)								
Datum	Meters	U.S. Survey Feet		Survey By	FGDC Acc.	Adj. Date	COH88	Geoid12A
NAVD88	109.287	358.55		RBF	2 cm	Oct 2013	Derived	-34.013