

# CONTROL SURVEY MONUMENT DATA AND RECOVERY SHEET

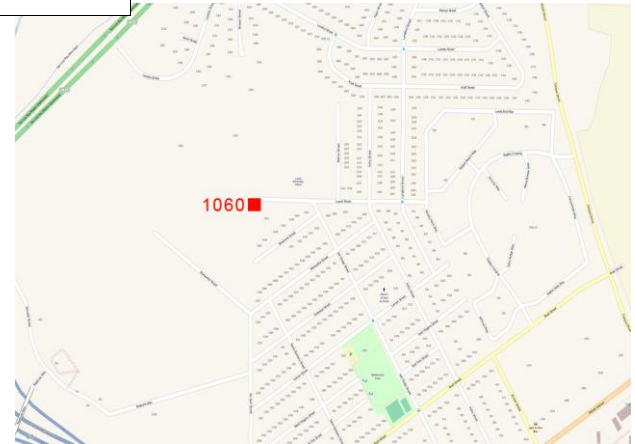
## City of Oceanside Geodetic Control Network



Number: **1060**                      **SET**  
 Name:    **LAUREL ST.**



Monument Location



Looking West

Vicinity Map

<b>Monument Description:</b> 2.5" Brass Disk set in Curb Inlet		GPS Useable: Yes	Additional Stamping: City of Oceanside Survey Control Station 1060 2013	
<b>Stamping:</b> LS 7854				
<b>Center Mark:</b> Triangle / Punch		<b>Depth:</b>		0
<b>Recovery By:</b> RBF	<b>Date:</b> July 2013	<b>Lid:</b>		



**Location:**

On top of westerly curb inlet of Laurel Street at west end of the Cul-De-Sac

California Geodetic Coordinates of 1983				CCS 83, Zone 6 Coordinates		NAD83(NSRS2007)	
	Deg.	Min.	Seconds	Meters	U.S. Survey Feet	Epoch:	2011.00
Latitude:	33	12	25.82705	615,960.054	2,020,862.28	FGDC Acc.:	1 cm
Longitude:	117	22	28.17789	1,895,165.306	6,217,721.51	Survey by:	RBF
Ellipsoid Height (m):	4.328			Combined Factor:	0.99995590	Adj. Date:	Oct 2013

California Orthometric Height (COH88)							
Datum	Meters	U.S. Survey Feet	Survey By	FGDC Acc.	Adj. Date	COH88	Geoid12A
NAVD88	38.959	127.82	RBF	2 cm	Oct 2013	Derived	-34.638