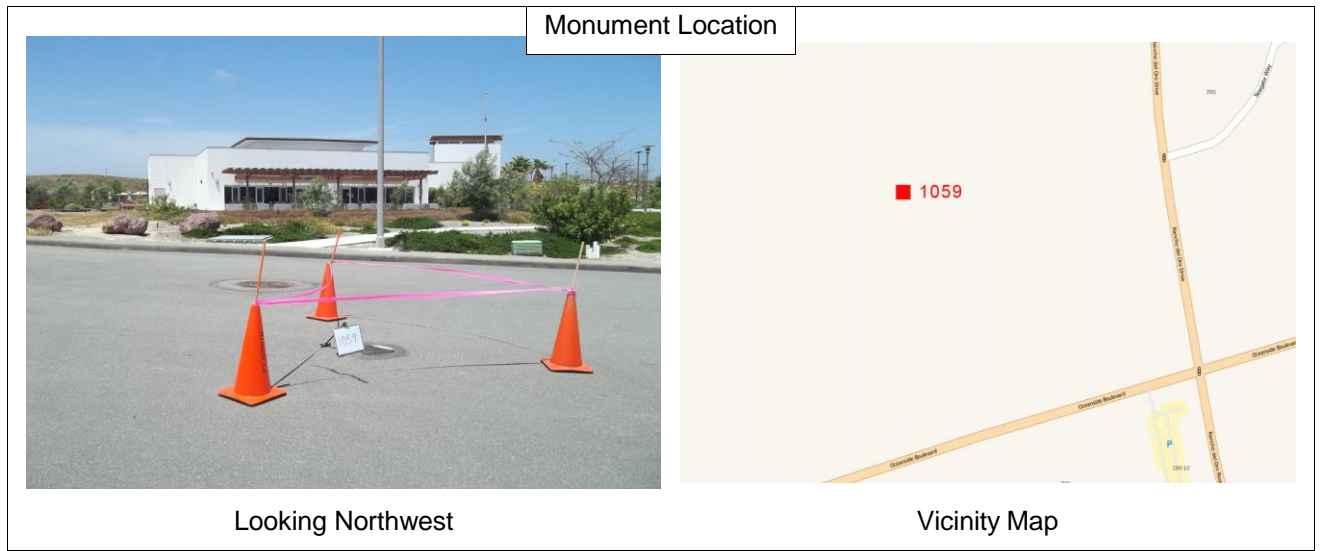


# CONTROL SURVEY MONUMENT DATA AND RECOVERY SHEET

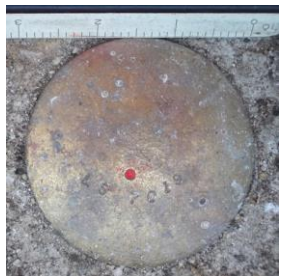
## City of Oceanside Geodetic Control Network



Number: **1059** **FOUND**  
 Name: **Rancho Del Oro and Senior Center Drive**



|   |                        |                      |       |
|---|------------------------|----------------------|-------|
| <b>Monument Description:</b> 3.5" Brass Disk set in Monument Well |                        | GPS Useable:         | Yes   |
| <b>Stamping:</b> LS 7019  |                        |                      |       |
| <b>Center Mark:</b> Punch   |                        | <b>Depth:</b>        | -0.43 |
| <b>Recovery By:</b> RBF   | <b>Date:</b> July 2013 | <b>Lid:</b> Monument |       |



**Location:**  
 Monument Well at apparent centerline of Senior Center Drive (+/-) 1050' westerly of apparent intersection of Rancho Del Oro and Senior Center Drive

| California Geodetic Coordinates of 1983 |        |                  |           | CCS 83, Zone 6 Coordinates |               |                  | NAD83(NSRS2007) |          |
|---|--------|------------------|-----------|----------------------------|---------------|------------------|-----------------|----------|
|   | Deg.   | Min.             | Seconds   |                            | Meters        | U.S. Survey Feet | Epoch:          | 2011.00  |
| Latitude:                               | 33     | 12               | 18.90719  | Northing:                  | 615,688.566   | 2,019,971.57     | FGDC Acc.:      | 1 cm     |
| Longitude:                              | 117    | 18               | 53.67354  | Easting:                   | 1,900,717.898 | 6,235,938.64     | Survey by:      | RBF      |
| Ellipsoid Height (m):                   | 33.455 |                  |           | Combined Factor:           | 0.99995140    |                  | Adj. Date:      | Oct 2013 |
| California Orthometric Height (COH88)   |        |                  |           |                            |               |                  |                 |          |
| Datum                                   | Meters | U.S. Survey Feet | Survey By | FGDC Acc.                  | Adj. Date     | COH88            | Geoid12A        |          |
| NAVD88                                  | 67.753 | 222.29           | RBF       | 2 cm                       | Oct 2013      | Derived          | -34.305         |          |