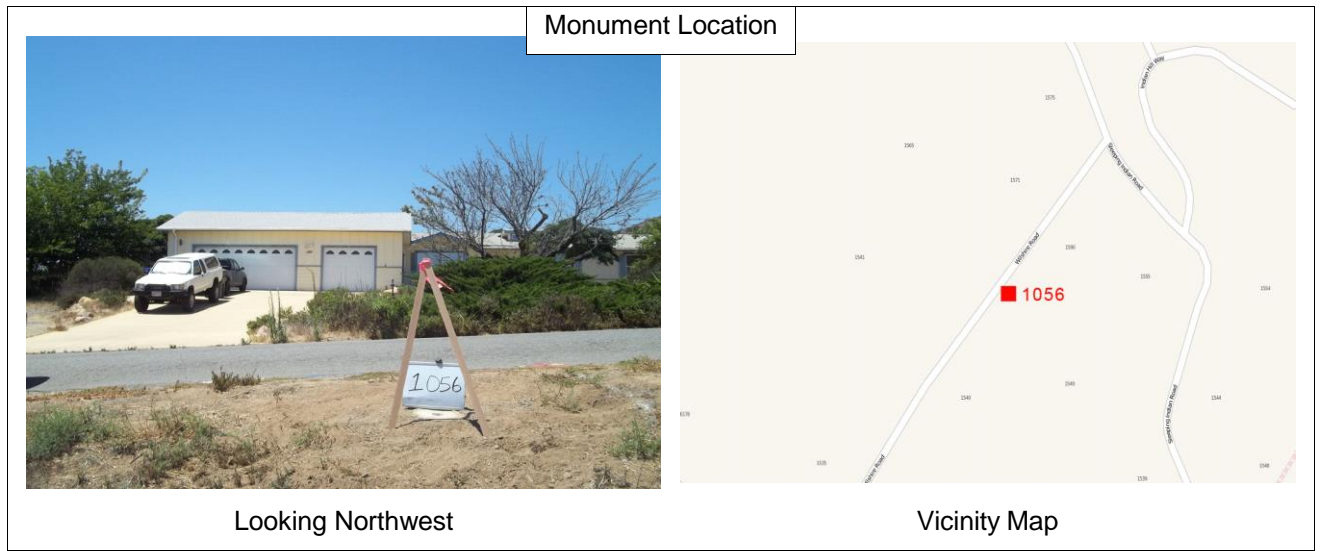


# CONTROL SURVEY MONUMENT DATA AND RECOVERY SHEET

## City of Oceanside Geodetic Control Network



Number: **1056** **SET**  
 Name: **1571 WILSHIRE RD.**



<b>Monument Description:</b> 2.5" Brass Disk set in Concrete	GPS Useable: Yes	Additional Stamping: City of Oceanside Survey Control Station 1056 2013
<b>Stamping:</b> LS 7854		
<b>Center Mark:</b> Triangle / Punch		<b>Depth:</b> 0
<b>Recovery By:</b> RBF	<b>Date:</b> August 2013	<b>Lid:</b>



**Location:**  
 On 10" dia. X 30" deep concrete Rod Monument (Type B), on easterly side of Wilshire Road (+/-) 440' southwesterly along Wilshire Road from Sleeping Indian Boulevard. (+/-) 5' from southerly edge of pavement across from 1571 Wilshire Boulevard

California Geodetic Coordinates of 1983				CCS 83, Zone 6 Coordinates		NAD83(NSRS2007)		
Latitude:	Deg.	Min.	Seconds	Northing:	Meters	U.S. Survey Feet	Epoch:	2011.00
	33	17	46.25917		625,728.657		2,052,911.44	FGDC Acc.:
Longitude:	117	16	3.35583	Easting:	1,905,226.958	6,250,732.11	Survey by:	RBF
	Ellipsoid Height (m):		182.013		Combined Factor:	0.99992579		Adj. Date:
California Orthometric Height (COH88)								
Datum	Meters	U.S. Survey Feet		Survey By	FGDC Acc.	Adj. Date	COH88	Geoid12A
NAVD88	215.725	707.76		RBF	2 cm	Oct 2013	Derived	-33.719