

# CONTROL SURVEY MONUMENT DATA AND RECOVERY SHEET

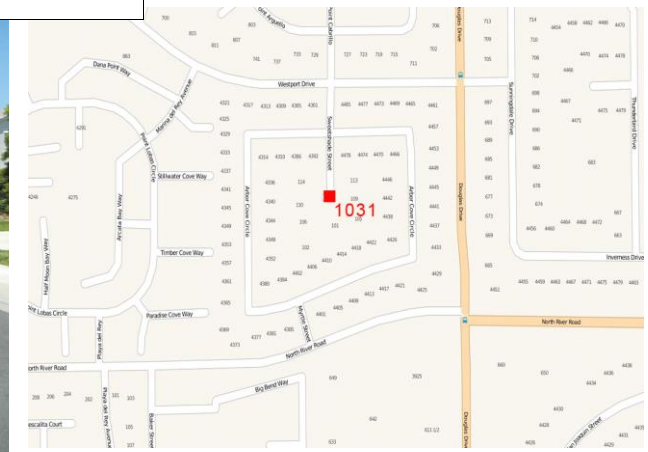
## City of Oceanside Geodetic Control Network



Number: **1031** **FOUND**  
 Name: **SWEETSHADE ST. & ARBOR COVE CR.**

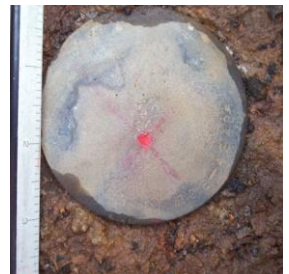


Monument Location



Vicinity Map

<b>Monument Description:</b> GPS Useable: Yes 3.5" Brass Disk in Monument Well			
<b>Stamping:</b> RCE 42485			
<b>Center Mark:</b> Punch			<b>Depth:</b> -0.45
<b>Recovery By:</b> RBF	<b>Date:</b> May 2013	<b>Lid:</b> Monument	



**Location:**  
 Easterly of 2 Monument Wells at apparent centerline of Sweetshade Street south of Arbor Cove Circle. Monument is not the center point of Cul-De-Sac.

California Geodetic Coordinates of 1983			CCS 83, Zone 6 Coordinates		NAD83(NSRS2007)	
	Deg.	Min. Seconds	Meters	U.S. Survey Feet	Epoch:	2011.00
Latitude:	33	14 47.06476	620,261.575	2,034,974.85	FGDC Acc.:	1 cm
Longitude:	117	19 27.65469	1,899,884.935	6,233,205.82	Survey by:	RBF
Ellipsoid Height (m):		-15.567	Combined Factor:	0.99995775	Adj. Date:	Oct 2013

California Orthometric Height (COH88)							
Datum	Meters	U.S. Survey Feet	Survey By	FGDC Acc.	Adj. Date	COH88	Geoid12A
NAVD88	18.627	61.11	RBF	2 cm	Oct 2013	Derived	-34.201