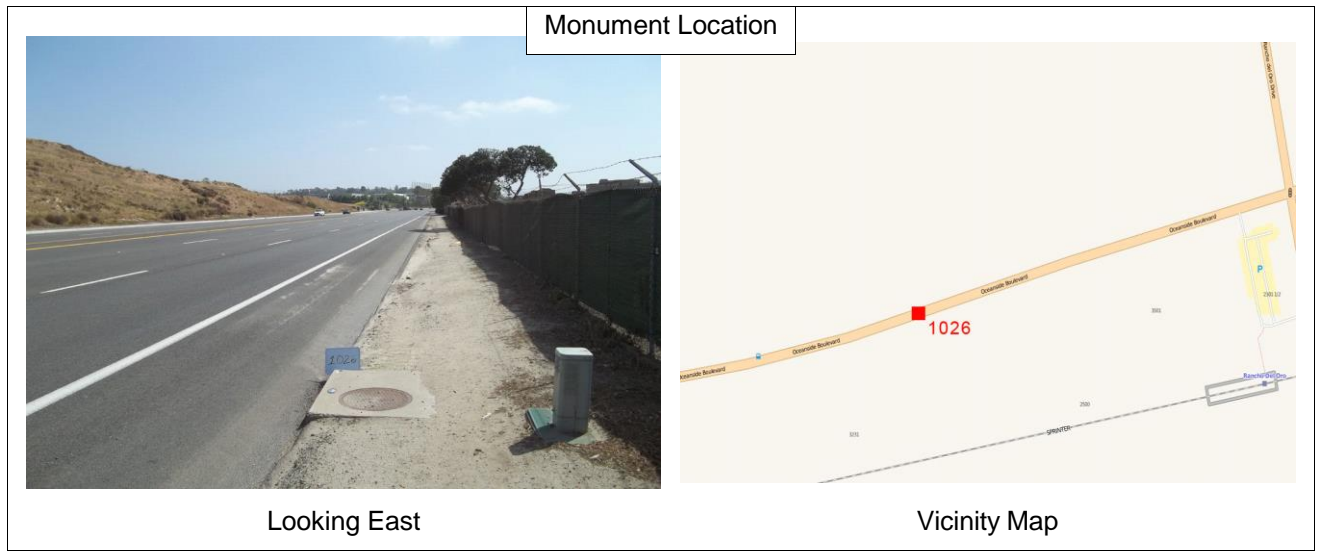


CONTROL SURVEY MONUMENT DATA AND RECOVERY SHEET

City of Oceanside Geodetic Control Network



Number: **1026** **FOUND**
 Name: **OCEANSIDE BLVD. & RANCHO DEL ORO**



Monument Description: 1.75" Brass Disk in Curb Inlet		GPS Useable: Yes	
Stamping: COS BM D17			
Center Mark: Punch		Depth:	0
Recovery By: RBF	Date: June 2013	Lid:	



Location:
 On top of southerly curb inlet of Oceanside Boulevard (+/-) 0.2 miles west of Rancho Del Oro

California Geodetic Coordinates of 1983				CCS 83, Zone 6 Coordinates		NAD83(NSRS2007)		
Latitude:	Deg.	Min.	Seconds	Northing:	Meters	U.S. Survey Feet	Epoch:	2011.00
	33	12	7.92774		615,350.473		2,018,862.34	FGDC Acc.:
Longitude:	117	18	54.15690	Easting:	1,900,701.926	6,235,886.23	Survey by:	RBF
	Ellipsoid Height (m):		8.208		Combined Factor:	0.99995548		Adj. Date:
California Orthometric Height (COH88)								
Datum	Meters	U.S. Survey Feet	Survey By	FGDC Acc.	Adj. Date	COH88	Geoid12A	
NAVD88	42.519	139.50	RBF	2 cm	Oct 2013	Derived	-34.318	