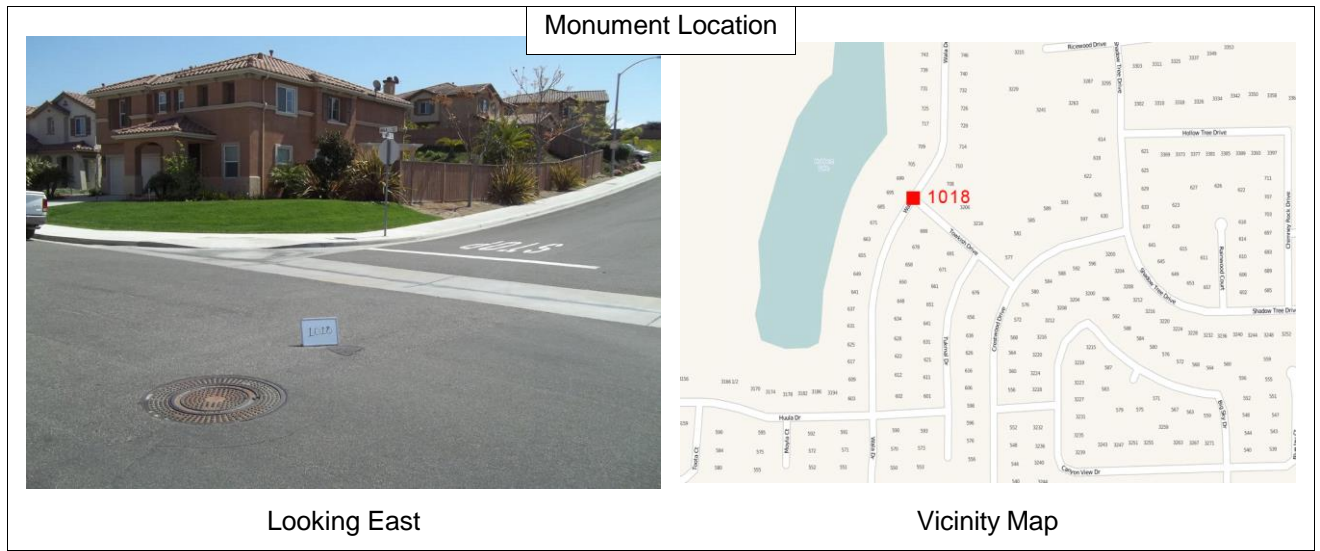


CONTROL SURVEY MONUMENT DATA AND RECOVERY SHEET

City of Oceanside Geodetic Control Network



Number: **1018** **FOUND**
 Name: **WALA DR. & TOWKISH DR.**



Monument Description: GPS Useable: Yes 3.5" Brass Disk in Monument Well			
Stamping: RCE 27732			
Center Mark: Punch		Depth: -0.55	
Recovery By: RBF	Date: May 2013	Lid: Monument	



Location:
 Monument Well at the apparent intersection of Wala Drive and Towkish Drive

California Geodetic Coordinates of 1983			CCS 83, Zone 6 Coordinates		NAD83(NSRS2007)		
	Deg. Min. Seconds		Meters	U.S. Survey Feet	Epoch:	2011.00	
Latitude:	33 13 34.73486	Northing:	618,062.334	2,027,759.51	FGDC Acc.:	1 cm	
Longitude:	117 21 14.42709	Easting:	1,897,097.617	6,224,061.10	Survey by:	RBF	
Ellipsoid Height (m):	-17.761	Combined Factor:	0.99995869		Adj. Date:	Oct 2013	
California Orthometric Height (COH88)							
Datum	Meters	U.S. Survey Feet	Survey By	FGDC Acc.	Adj. Date	COH88	Geoid12A
NAVD88	16.672	54.70	RBF	2 cm	Oct 2013	Derived	-34.440