

CONTROL SURVEY MONUMENT DATA AND RECOVERY SHEET

City of Oceanside Geodetic Control Network



Number: **1017** **FOUND**
 Name: **JONES RD. & BENET RD.**



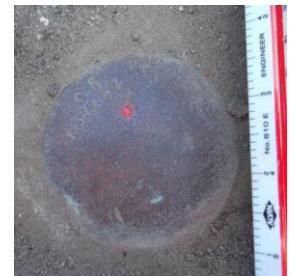
Looking Northwest

Monument Location



Vicinity Map

Monument Description: GPS Useable: Yes 3.5" Brass Disk in Monument Well		Depth: -0.47
Stamping: RCE 13817		
Center Mark: Punch	Lid: Monument	
Recovery By: RBF	Date: May 2013	



Location:
 Monument Well at apparent intersection of Jones Road and Benet Road

California Geodetic Coordinates of 1983			CCS 83, Zone 6 Coordinates		NAD83(NSRS2007)		
	Deg.	Min. Seconds	Meters	U.S. Survey Feet	Epoch:	2011.00	
Latitude:	33	12 38.27551	616,323.006	2,022,053.06	FGDC Acc.:	1 cm	
Longitude:	117	21 14.02936	1,897,089.500	6,224,034.47	Survey by:	RBF	
Ellipsoid Height (m):		-26.133	Combined Factor:	0.99996055	Adj. Date:	Oct 2013	
California Orthometric Height (COH88)							
Datum	Meters	U.S. Survey Feet	Survey By	FGDC Acc.	Adj. Date	COH88	Geoid12A
NAVD88	8.370	27.46	RBF	2 cm	Oct 2013	Derived	-34.510